

Recombinant Human CRY1 Protein (Val3-Leu132), N-GST tagged

Cat. No. CRY1-1818H Lot. No. (See product label)

SPECIFICATION

Product Overview	Recombinant human CRY1 (Val3-Leu132) fused with N-GST tag was expressed in E. coli.
Species	Human
Source	E.coli
ProteinLength	Val3-Leu132
Form	Lyophilized powder/frozen liquid
Molecular Mass	41.80 kDa
Purity	>90% as determined by SDS-PAGE
Notes	For research use only.
Storage	Use a manual defrost freezer and avoid repeated freeze thaw cycles. Store at 2 to 8 centigrade for one week. Store at -20 to -80 centigrade for twelve months from the date of receipt.
Storage Buffer	0.01M PBS, pH 7.4, 0.02% NLS
Reconstitution	Reconstitute in sterile water for a stock solution.

 Tel: 1-631-559-9269 1-516-512-3133

 Email: info@creative-biomart.com  Fax: 1-631-938-8127

 45-1 Ramsey Road, Shirley, NY 11967, USA

Shipping They are shipped out with dry ice/blue ice unless customers require otherwise.

GENE INFORMATION

Gene Name CRY1 cryptochrome 1 (photolyase-like) [Homo sapiens (human)]

Official Symbol CRY1

Synonyms CRY1; cryptochrome 1 (photolyase-like); PHLL1; cryptochrome-1; photolyase-like cryptochrome 1;

Gene ID 1407

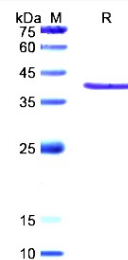
mRNA Refseq NM_004075

Protein Refseq NP_004066

MIM 601933

UniProt ID Q16526

SDS-PAGE



Tel: 1-631-559-9269 1-516-512-3133

Email: info@creative-biomart.com Fax: 1-631-938-8127

45-1 Ramsey Road, Shirley, NY 11967, USA