

Recombinant Human CRY1 Protein, GST-tagged

Cat. No. CRY1-1922H Lot. No. (See product label)

SPECIFICATION

Product Overview	Human CRY1 full-length ORF (AAH30519, 1 a.a. - 586 a.a.) recombinant protein with GST-tag at N-terminal.
Species	Human
Source	Wheat Germ
Description	This gene encodes a flavin adenine dinucleotide-binding protein that is a key component of the circadian core oscillator complex, which regulates the circadian clock. This gene is upregulated by CLOCK/ARNTL heterodimers but then represses this upregulation in a feedback loop using PER/CRY heterodimers to interact with CLOCK/ARNTL. Polymorphisms in this gene have been associated with altered sleep patterns. The encoded protein is widely conserved across plants and animals. Loss of the related gene in mouse results in a shortened circadian cycle in complete darkness. [provided by RefSeq, Jan 2014]
Molecular Mass	90.20 kDa
AA Sequence	MGVNAVHWFRKGLRLHDNPALKECIQGADTIRCVYILDPFAGSSNVGINRWRFL QCLEDLDANLRKLNRLVIRGQPADVFPRLFKEWNITKLSIEYDSEPFGERDAAIK KLATEAGVEVIVRISHTLYDLDKIIELNGGQPPLTYKRFQTLISKMEPLEIPVETITSEVI EKCTTPLSDDHDEKYGVPSLEELGFDTDGLSSAVWPGGETEALTRLERHLERKAWV ANFERPRMNANSLASPTGLSPYLRFGCLSCRLFYFKLTDLYKKVKKNSSPPLSLYG QLLWREFFYTAATNNPRFDKMEGNPICVQIPWDKNPEALAKWAEGRTGFPWIDAIM

 Tel: 1-631-559-9269 1-516-512-3133

 Email: info@creative-biomart.com  Fax: 1-631-938-8127

 45-1 Ramsey Road, Shirley, NY 11967, USA



TQLRQEGWIIHLARHAVACFLTRGDLWISWEEGMKVFEELLLDADWSINAGSWMW
 LSCSSFFQQFFHCYCPVGFGRRTDPNGDYIRRYLPVLRGFPAKIYIDPWNAPGIIQ
 KVAKCLIGVNYPKPMVNHAEASRLNIERMKQIYQQLSRYRGLGLLASVPSNPNGNG
 GFMGYSAENIPGCSSSGSCSQSGILHYAHGDSQQTHLLKQGRSSMGTGLSGGKR
 PSQEEDTQSIGPKVQRQSTN

Applications
 Enzyme-linked Immunoabsorbent Assay
 Western Blot (Recombinant protein)
 Antibody Production
 Protein Array

Notes
 Best use within three months from the date of receipt of this protein.

Storage
 Store at -80 centigrade. Aliquot to avoid repeated freezing and thawing.

Storage Buffer
 50 mM Tris-HCl, 10 mM reduced Glutathione, pH=8.0 in the elution buffer.

GENE INFORMATION

Gene Name [CRY1 cryptochrome 1 \(photolyase-like\) \[Homo sapiens \]](#)

Official Symbol [CRY1](#)

Synonyms CRY1; cryptochrome 1 (photolyase-like); PHLL1; cryptochrome-1; photolyase-like cryptochrome 1;

Gene ID [1407](#)

mRNA Refseq [NM_004075](#)

Protein Refseq [NP_004066](#)

Tel: 1-631-559-9269 1-516-512-3133

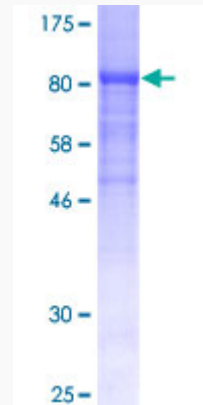
Email: info@creative-biomart.com Fax: 1-631-938-8127

45-1 Ramsey Road, Shirley, NY 11967, USA

MIM 601933

UniProt ID Q16526

**Quality Control
Testing:**



12.5% SDS-PAGE Stained with Coomassie Blue.

 Tel: 1-631-559-9269 1-516-512-3133

 Email: info@creative-biomart.com  Fax: 1-631-938-8127

 45-1 Ramsey Road, Shirley, NY 11967, USA