

Recombinant Human CRY1 Protein, Myc/DDK-tagged, C13 and N15-labeled

Cat. No. CRY1-2082H **Lot. No.** (See product label)

SPECIFICATION

Product Overview	CRY1 MS Standard C13 and N15-labeled recombinant protein (NP_004066) with a C-terminal MYC/DDK tag, was expressed in HEK293 cells.
Species	Human
Source	HEK293
Description	This gene encodes a flavin adenine dinucleotide-binding protein that is a key component of the circadian core oscillator complex, which regulates the circadian clock. This gene is upregulated by CLOCK/ARNTL heterodimers but then represses this upregulation in a feedback loop using PER/CRY heterodimers to interact with CLOCK/ARNTL. Polymorphisms in this gene have been associated with altered sleep patterns. The encoded protein is widely conserved across plants and animals. Loss of the related gene in mouse results in a shortened circadian cycle in complete darkness.
Molecular Mass	66.4 kDa
AA Sequence	MGVNAVHWFRKGLRLHDNPALKECIQGADTIRCVYILDWPFAGSSNVGINRWRFL QCLEDLDANLRKLNLSRLFVIRGQPADVFPRLFKEWNITKLSIEYDSEPFGERDAAIK KLATEAGVEVIVRISHTLYDLDKIIELNQGGQPPLTYKRFQTLISKMEPLEIPVETITSEVI EKCTTPLSDDHDEKYGVPVSLLEELGFDTDGLSSAVWPGGETEALTRLERHLERKAWV ANFERPRMNANLLASPTGLSPYLRFGCLSCRLFYFKLTDLYKKVKKNSPPLSLYG

 Tel: 1-631-559-9269 1-516-512-3133

 Email: info@creative-biomart.com  Fax: 1-631-938-8127

 45-1 Ramsey Road, Shirley, NY 11967, USA

QLLWREFFYTAATNNPRFDKMEGNPICVQIPWDKNPEALAKWAEGRTGFPWIDAIM
 TQLRQEGWIHHLARHAVACFLTRGDLWISWEEGMKVFEELLDADWSINAGSWMW
 LSCSSFFQQFFHCYCPVGFGRRTDPNGDYIRRYLPVLRGFPAKYIYDPWNAPEGIQ
 KVAKCLIGVNYPKPMVNHAEASRLNIERMKQIYQQLSRYRGLGLLASVPSNPNGNG
 GFMGYSAENIPGCSSSGSCSQGSGILHYAHGDSQQTHLLKQGRSSMGTGLSGGKR
 PSQEEDTQSIGPKVQRQSTNTRTRPLEQKLISEEDLAANDILDYKDDDDKV

Purity	> 80% as determined by SDS-PAGE and Coomassie blue staining
Stability	Stable for 3 months from receipt of products under proper storage and handling conditions.
Storage	Store at -80 centigrade. Avoid repeated freeze-thaw cycles.
Concentration	50 µg/mL as determined by BCA
Storage Buffer	100 mM glycine, 25 mM Tris-HCl, pH 7.3.

GENE INFORMATION

Gene Name	CRY1 cryptochrome circadian regulator 1 [Homo sapiens (human)]
Official Symbol	CRY1
Synonyms	CRY1; cryptochrome 1 (photolyase-like); PHLL1; cryptochrome-1; photolyase-like cryptochrome 1;
Gene ID	1407
mRNA Refseq	NM_004075

 Tel: 1-631-559-9269 1-516-512-3133

 Email: info@creative-biomart.com  Fax: 1-631-938-8127

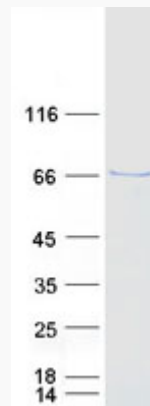
 45-1 Ramsey Road, Shirley, NY 11967, USA

Protein Refseq NP_004066

MIM 601933

UniProt ID Q16526

SDS-PAGE



 Tel: 1-631-559-9269 1-516-512-3133

 Email: info@creative-biomart.com  Fax: 1-631-938-8127

 45-1 Ramsey Road, Shirley, NY 11967, USA