

Recombinant Human CRY1 Protein, His/GST-tagged

Cat. No. CRY1-639H **Lot. No.** (See product label)

SPECIFICATION

Product Overview	Recombinant Human CRY1(Val3~Leu132) fused with His/GST tag at N-terminal was expressed in E. coli.
Species	Human
Source	E.coli
ProteinLength	Val3~Leu132
Description	This gene encodes a flavin adenine dinucleotide-binding protein that is a key component of the circadian core oscillator complex, which regulates the circadian clock. This gene is upregulated by CLOCK/ARNTL heterodimers but then represses this upregulation in a feedback loop using PER/CRY heterodimers to interact with CLOCK/ARNTL. Polymorphisms in this gene have been associated with altered sleep patterns. The encoded protein is widely conserved across plants and animals. Loss of the related gene in mouse results in a shortened circadian cycle in complete darkness.
Form	PBS, pH7.4, containing 0.01% SKL, 1mM DTT, 5% Trehalose and Proclin300.
Molecular Mass	45.0kDa
Endotoxin	<1.0EU per 1ug (determined by the LAL method)
Purity	> 95%

 Tel: 1-631-559-9269 1-516-512-3133

 Email: info@creative-biomart.com  Fax: 1-631-938-8127

 45-1 Ramsey Road, Shirley, NY 11967, USA

Applications	Positive Control; Immunogen; SDS-PAGE; WB. If bio-activity of the protein is needed, please check active protein
Stability	The thermal stability is described by the loss rate. The loss rate was determined by accelerated thermal degradation test, that is, incubate the protein at 37 centigrade for 48h, and no obvious degradation and precipitation were observed. The loss rate is less than 5% within the expiration date under appropriate storage condition.
Storage	Avoid repeated freeze/thaw cycles. Store at 2-8 centigrade for one month. Aliquot and store at -80 centigrade for 12 months.
Reconstitution	Reconstitute in PBS or others

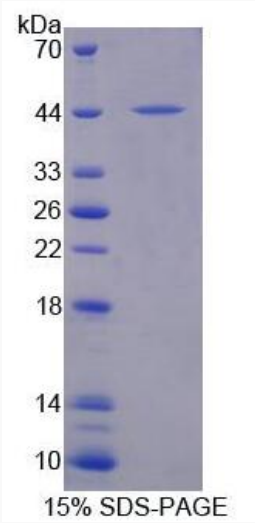
GENE INFORMATION

Gene Name	CRY1 cryptochrome 1 (photolyase-like) [Homo sapiens]
Official Symbol	CRY1
Synonyms	CRY1; cryptochrome 1 (photolyase-like); PHLL1; cryptochrome-1; photolyase-like cryptochrome 1;
Gene ID	1407
mRNA Refseq	NM_004075
Protein Refseq	NP_004066
MIM	601933
UniProt ID	Q16526

 Tel: 1-631-559-9269 1-516-512-3133

 Email: info@creative-biomart.com  Fax: 1-631-938-8127

 45-1 Ramsey Road, Shirley, NY 11967, USA



Tel: 1-631-559-9269 1-516-512-3133

Email: info@creative-biomart.com Fax: 1-631-938-8127

45-1 Ramsey Road, Shirley, NY 11967, USA