

Recombinant *Bacillus Thuringiensis* Subsp. *Kurstaki* CRY1AB Protein (1022-1155 aa), His-tagged

Cat. No. CRY1AB-1624B Lot. No. (See product label)

SPECIFICATION

Product Overview	Recombinant <i>Bacillus Thuringiensis</i> Subsp. <i>Kurstaki</i> CRY1AB Protein (1022-1155 aa) is produced by Yeast expression system. This protein is fused with a 6xHis tag at the N-terminal. Protein Description: Partial.
Species	<i>Bacillus thuringiensis</i>
Source	Yeast
ProteinLength	1022-1155 aa
Description	Promotes colloidosmotic lysis by binding to the midgut epithelial cells of many lepidopteran larvae.
Form	Tris-based buffer, 50% glycerol
Molecular Mass	17.3 kDa
AA Sequence	HEIENNTDELKFSNCVVEEVYPNNTVTCNDYTATQEEYEGTYTSRNRGYDGAYESN SSVPADYASAYEEKAYTDGRRDNPCESNRGYGDYTPLPAGYVTKELYFPETDKV WIEIGETEGTFIVDSVELLLMEE
Purity	> 90% as determined by SDS-PAGE.
Notes	Repeated freezing and thawing is not recommended. Store working aliquots at 4

 Tel: 1-631-559-9269 1-516-512-3133

 Email: info@creative-biomart.com  Fax: 1-631-938-8127

 45-1 Ramsey Road, Shirley, NY 11967, USA

centigrade for up to one week.

Storage

The shelf life is related to many factors, storage state, buffer ingredients, storage temperature and the stability of the protein itself. Generally, the shelf life of liquid form is 6 months at -20 centigrade/-80 centigrade. The shelf life of lyophilized form is 12 months at -20 centigrade/-80 centigrade.

Concentration

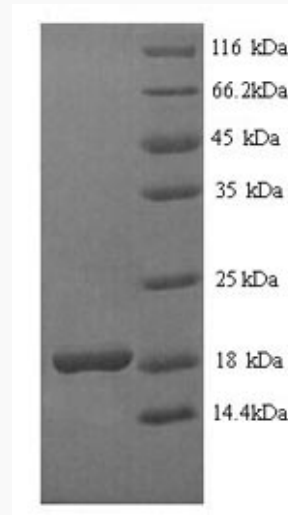
A hardcopy of COA with reconstitution instruction is sent along with the products.

GENE INFORMATION**Synonyms**

cry1Ab; 130 kDa crystal protein; Crystalline entomocidal protoxinInsecticidal delta-endotoxin CryIA(b);

UniProt ID

[P0A370](#)



(Tris-Glycine gel) Discontinuous SDS-PAGE (reduced) with 5% enrichment gel and 15% separation gel.

 Tel: 1-631-559-9269 1-516-512-3133

 Email: info@creative-biomart.com  Fax: 1-631-938-8127

 45-1 Ramsey Road, Shirley, NY 11967, USA