

# Recombinant *Bacillus Thuringiensis* Subsp. *Kurstaki* CRY1AB Protein (1022-1155 aa), His-SUMO-tagged

Cat. No. CRY1AB-962B    Lot. No. (See product label)

## SPECIFICATION

<b>Product Overview</b>	Recombinant <i>Bacillus Thuringiensis</i> Subsp. <i>Kurstaki</i> CRY1AB Protein (1022-1155 aa) is produced by E. coli expression system. This protein is fused with a 6xHis-SUMO tag at the N-terminal. Protein Description: Partial.
<b>Species</b>	<i>Bacillus thuringiensis</i>
<b>Source</b>	E.coli
<b>ProteinLength</b>	1022-1155 aa
<b>Description</b>	Promotes colloidosmotic lysis by binding to the midgut epithelial cells of many lepidopteran larvae.
<b>Form</b>	Tris-based buffer, 50% glycerol
<b>Molecular Mass</b>	31.3 kDa
<b>AA Sequence</b>	HEIENNTDELKFSNCVVEEVYPNNTVTCNDYTATQEEYEGTYTSRNRGYDGAYESN SSVPADYASAYEEKAYTDGRRDNPCESNRGYGDYTPLPAGYVTKELYFPETDKV WIEIGETEGTFIVDSVELLLMEE
<b>Purity</b>	> 90% as determined by SDS-PAGE.
<b>Notes</b>	Repeated freezing and thawing is not recommended. Store working aliquots at 4

 Tel: 1-631-559-9269    1-516-512-3133

 Email: [info@creative-biomart.com](mailto:info@creative-biomart.com)     Fax: 1-631-938-8127

 45-1 Ramsey Road, Shirley, NY 11967, USA

centigrade for up to one week.

**Storage**

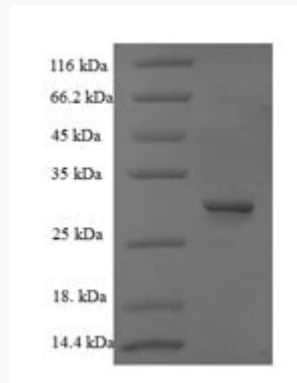
The shelf life is related to many factors, storage state, buffer ingredients, storage temperature and the stability of the protein itself. Generally, the shelf life of liquid form is 6 months at -20 centigrade/-80 centigrade. The shelf life of lyophilized form is 12 months at -20 centigrade/-80 centigrade.

**Concentration**

A hardcopy of COA with concentration instruction is sent along with the products.

**GENE INFORMATION****UniProt ID**

P0A370



(Tris-Glycine gel) Discontinuous SDS-PAGE (reduced) with 5% enrichment gel and 15% separation gel.

 Tel: 1-631-559-9269 1-516-512-3133

 Email: [info@creative-biomart.com](mailto:info@creative-biomart.com)  Fax: 1-631-938-8127

 45-1 Ramsey Road, Shirley, NY 11967, USA