

Recombinant Human CRY2 Protein, GST-tagged

Cat. No. CRY2-1923H Lot. No. (See product label)

SPECIFICATION

Product Overview	Human CRY2 full-length ORF (NP_066940.1, 1 a.a. - 593 a.a.) recombinant protein with GST-tag at N-terminal.
Species	Human
Source	Wheat Germ
Description	<p>This gene encodes a flavin adenine dinucleotide-binding protein that is a key component of the circadian core oscillator complex, which regulates the circadian clock. This gene is upregulated by CLOCK/ARNTL heterodimers but then represses this upregulation in a feedback loop using PER/CRY heterodimers to interact with CLOCK/ARNTL. Polymorphisms in this gene have been associated with altered sleep patterns. The encoded protein is widely conserved across plants and animals. Two transcript variants encoding different isoforms have been found for this gene. [provided by RefSeq, Feb 2014]</p>
Molecular Mass	93.3 kDa
AA Sequence	<p>MAATVATAAAVAPAPAPGTDSASSVHWFRKGLRLHDNPALLAAVARGARCVRCVYIL DPWFAASSSVGINRWRFLQSLLEDLDTSLRKLNSRLFVVRGQPADVFPRLFKEWGV TRLTFEYDSEPFGERDAAIMKMAKEAGVEVVVTENSHTLYDLDRIIELNGQKPPLTYK RFQAIISRMELPKKPVGLVTSQQMESCR AEIQENHDETYGVPSLEELGFPTTEGLGPA VWQGGETEALARLDKHLERKAWVANYERPRMNANSLASPTGLSPYLRFGCLSCR LFYYRLWDLYKKVKRNSTPPLSLFGQLLWREFFYTAATNNPRFDRMEGNPICIQIPW</p>

 Tel: 1-631-559-9269 1-516-512-3133

 Email: info@creative-biomart.com  Fax: 1-631-938-8127

 45-1 Ramsey Road, Shirley, NY 11967, USA

DRNPEALAKWAEGKTGFPWIDAIMTQLRQEGWIHHLARHAVACFLTRGDLWVSWE
 SGVRVFDLLLLDADFSVNAGSMMWLSCSAFFQQFFHCYCPVGFGRRTDPSGDYIR
 RYLPKLKAFPSRYIYEPWNAPESIQKAAKCIIGVDYPRPIVNHAETSRLNIERMKQIQ
 QLSRYRGLCLLASVPSCVEDLSHPVAEPSSSQAGSMSSAGPRPLPSGPASPCKRLE
 AAEEPPGEELSKRARVAELPTPELPSKDA

Applications
 Enzyme-linked Immunoabsorbent Assay
 Western Blot (Recombinant protein)
 Antibody Production
 Protein Array

Notes Best use within three months from the date of receipt of this protein.

Storage Store at -80 centigrade. Aliquot to avoid repeated freezing and thawing.

Storage Buffer 50 mM Tris-HCl, 10 mM reduced Glutathione, pH=8.0 in the elution buffer.

GENE INFORMATION

Gene Name [CRY2 cryptochrome 2 \(photolyase-like\) \[Homo sapiens \]](#)

Official Symbol [CRY2](#)

Synonyms CRY2; cryptochrome 2 (photolyase-like); cryptochrome-2; growth-inhibiting protein 37; HCRY2; PHLL2; FLJ10332; KIAA0658;

Gene ID [1408](#)

mRNA Refseq [NM_001127457](#)

Protein Refseq [NP_001120929](#)

 Tel: 1-631-559-9269 1-516-512-3133

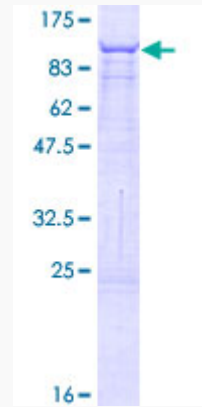
 Email: info@creative-biomart.com  Fax: 1-631-938-8127

 45-1 Ramsey Road, Shirley, NY 11967, USA

MIM 603732

UniProt ID Q49AN0

Quality Control
Testing:



12.5% SDS-PAGE Stained with Coomassie Blue.

Tel: 1-631-559-9269 1-516-512-3133

Email: info@creative-biomart.com Fax: 1-631-938-8127

45-1 Ramsey Road, Shirley, NY 11967, USA