

Recombinant Human CRY2 Protein, Myc/DDK-tagged, C13 and N15-labeled

Cat. No. CRY2-647H **Lot. No.** (See product label)

SPECIFICATION

Product Overview	CRY2 MS Standard C13 and N15-labeled recombinant protein (NP_066940) with a C-terminal MYC/DDK tag, was expressed in HEK293 cells.
Species	Human
Source	HEK293
Description	This gene encodes a flavin adenine dinucleotide-binding protein that is a key component of the circadian core oscillator complex, which regulates the circadian clock. This gene is upregulated by CLOCK/ARNTL heterodimers but then represses this upregulation in a feedback loop using PER/CRY heterodimers to interact with CLOCK/ARNTL. Polymorphisms in this gene have been associated with altered sleep patterns. The encoded protein is widely conserved across plants and animals. Two transcript variants encoding different isoforms have been found for this gene.
Molecular Mass	66.9 kDa
AA Sequence	MAATVATAAAVAPAPAPGTDSASSVHWFRKGLRLHDNPALLAAVARGARCVRCVYIL DPWFAASSVGINRWRFLQSLDLTSLRKLNSRLFVVVRGQPADVFPRLFKEWGV TRLTFEYDSEPFGERDAAIMKMAKEAGVEVVVTENSHTLYDLDRIIELNGQKPPLTYK RFQAIISRMEPKKPVGLVTSQQMESCRAEIQENHDETYGVPSLEELGFPTTEGLGPA VWQGGETEALARLDKHLERKAWVANYERPRMNANSLLASPTGLSPYLRFGCLSCR LFYYRLWDLYKKVKRNSTPPLSLFGQLLWREFFYTAATNNPRFDRMEGNPICIQIPW

 Tel: 1-631-559-9269 1-516-512-3133

 Email: info@creative-biomart.com  Fax: 1-631-938-8127

 45-1 Ramsey Road, Shirley, NY 11967, USA

DRNPEALAKWAEGKTGFPWIDAIMTQLRQEGWIHHLARHAVACFLTRGDLWVSWE
 SGVRVFDLLLLDADFSVNAGSWMWLSCSAFFQQFFHCYCPVGFGRRTDPSGDYIR
 RYLPKLFKAFPSRYIYEPWNAPESIQKAAKCIIGVDYPRPIVNHAETSRLNIERMKQIQ
 QLSRYRGLCLLASVPSCVEDLSHPVAEPSSSQAGSMSSAGPRPLPSGPASPKRKLE
 AAEEPPGEELSKRARVAELPTPELPSKDATRTRPLEQKLISEEDLAANDILDYKDDDD
 KV

Purity > 80% as determined by SDS-PAGE and Coomassie blue staining

Stability Stable for 3 months from receipt of products under proper storage and handling conditions.

Storage Store at -80 centigrade. Avoid repeated freeze-thaw cycles.

Concentration 50 µg/mL as determined by BCA

Storage Buffer 100 mM glycine, 25 mM Tris-HCl, pH 7.3.

GENE INFORMATION

Gene Name CRY2 cryptochrome circadian regulator 2 [Homo sapiens (human)]

Official Symbol CRY2

Synonyms CRY2; cryptochrome 2 (photolyase-like); cryptochrome-2; growth-inhibiting protein 37; HCRY2; PHLL2; FLJ10332; KIAA0658;

Gene ID 1408

mRNA Refseq NM_021117

 Tel: 1-631-559-9269 1-516-512-3133

 Email: info@creative-biomart.com  Fax: 1-631-938-8127

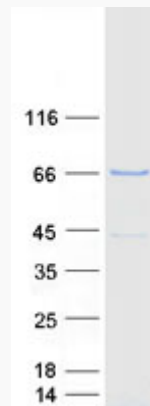
 45-1 Ramsey Road, Shirley, NY 11967, USA

Protein Refseq NP_066940

MIM 603732

UniProt ID Q49AN0

SDS-PAGE



 Tel: 1-631-559-9269 1-516-512-3133

 Email: info@creative-biomart.com  Fax: 1-631-938-8127

 45-1 Ramsey Road, Shirley, NY 11967, USA