

Recombinant Human CRYAA Protein (Met1-Ser173), C-His tagged

Cat. No. CRYAA-1819H Lot. No. (See product label)

SPECIFICATION

Product Overview	Recombinant human CRYAA (Met1-Ser173) fused with C-terminal His tag was expressed in E. coli.
Species	Human
Source	E.coli
ProteinLength	Met1-Ser173
Form	Lyophilized powder/frozen liquid
Molecular Mass	19.03 kDa
Purity	>90% as determined by SDS-PAGE
Notes	For research use only.
Storage	Use a manual defrost freezer and avoid repeated freeze thaw cycles. Store at 2 to 8 centigrade for one week. Store at -20 to -80 centigrade for twelve months from the date of receipt.
Storage Buffer	Supplied as solution form in PBS or lyophilized from PBS.
Reconstitution	Reconstitute in sterile water for a stock solution.

 Tel: 1-631-559-9269 1-516-512-3133

 Email: info@creative-biomart.com  Fax: 1-631-938-8127

 45-1 Ramsey Road, Shirley, NY 11967, USA

Shipping

They are shipped out with dry ice/blue ice unless customers require otherwise.

GENE INFORMATION**Gene Name**

CRYAA crystallin, alpha A [Homo sapiens (human)]

Official Symbol

CRYAA

Synonyms

CRYAA; crystallin, alpha A; CRYA1; alpha-crystallin A chain; HSPB4; crystallin, alpha-1; heat shock protein beta-4; human alphaA-crystallin (CRYA1);

Gene ID

1409

mRNA Refseq

NM_000394

Protein Refseq

NP_000385

MIM

123620

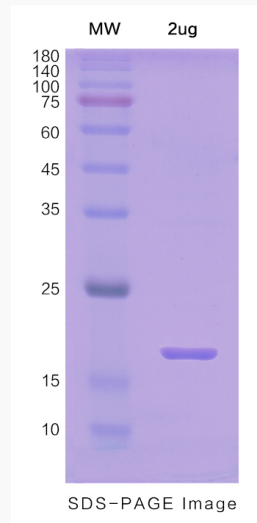
UniProt ID

P02489

 Tel: 1-631-559-9269 1-516-512-3133 Email: info@creative-biomart.com  Fax: 1-631-938-8127 45-1 Ramsey Road, Shirley, NY 11967, USA



SDS-PAGE



Tel: 1-631-559-9269 1-516-512-3133

Email: info@creative-biomart.com Fax: 1-631-938-8127

45-1 Ramsey Road, Shirley, NY 11967, USA