

Recombinant Human CRYAA protein, His-tagged

Cat. No. CRYAA-5488H Lot. No. (See product label)

SPECIFICATION

Product Overview	Recombinant Human CRYAA protein(P02489)(188aa), fused with N-terminal His tag, was expressed in E. coli.
Species	Human
Source	E.coli
Protein Length	188aa(including fusion tag)
Tag	N-His
Form	20mM Tris.Cl, 50mM NaCl, 20% Glycerol, pH8.0.
Molecular Mass	21.8kDa(including fusion tag)
Storage	Store at -80°C and avoid repeated freeze-thaw cycles.
Reconstitution	It is recommended that sterile water be added to the vial to prepare a stock solution of 0.2 ug/ul. Centrifuge the vial at 4°C before opening to recover the entire contents.

GENE INFORMATION

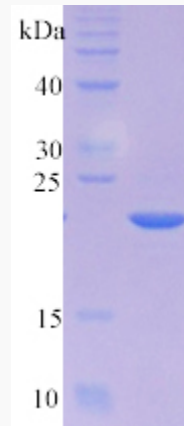
Gene Name	CRYAA crystallin, alpha A [Homo sapiens]
Official Symbol	CRYAA

 Tel: 1-631-559-9269 1-516-512-3133

 Email: info@creative-biomart.com  Fax: 1-631-938-8127

 45-1 Ramsey Road, Shirley, NY 11967, USA

Synonyms	CRYAA; crystallin, alpha A; CRYA1; alpha-crystallin A chain; HSPB4; crystallin, alpha-1; heat shock protein beta-4; human alphaA-crystallin (CRYA1);
Gene ID	1409
mRNA Refseq	NM_000394
Protein Refseq	NP_000385
UniProt ID	P02489

SDS-PAGE

 Tel: 1-631-559-9269 1-516-512-3133

 Email: info@creative-biomart.com  Fax: 1-631-938-8127

 45-1 Ramsey Road, Shirley, NY 11967, USA