

Recombinant Full Length Human CRYAB Protein, C-Flag-tagged

Cat. No. CRYAB-1060HFL Lot. No. (See product label)

SPECIFICATION

Product Overview Recombinant Full Length Human CRYAB Protein, fused to Flag-tag at C-terminus, was expressed in Mammalian cells.

Species Human

Source Mammalian Cells

Description

Mammalian lens crystallins are divided into alpha, beta, and gamma families. Alpha crystallins are composed of two gene products: alpha-A and alpha-B, for acidic and basic, respectively. Alpha crystallins can be induced by heat shock and are members of the small heat shock protein (HSP20) family. They act as molecular chaperones although they do not renature proteins and release them in the fashion of a true chaperone; instead they hold them in large soluble aggregates. These heterogeneous aggregates consist of 30-40 subunits; the alpha-A and alpha-B subunits have a 3:1 ratio, respectively. Two additional functions of alpha crystallins are an autokinase activity and participation in the intracellular architecture. The encoded protein has been identified as a moonlighting protein based on its ability to perform mechanistically distinct functions. Alpha-A and alpha-B gene products are differentially expressed; alpha-A is preferentially restricted to the lens and alpha-B is expressed widely in many tissues and organs. Elevated expression of alpha-B crystallin occurs in many neurological diseases; a missense mutation cosegregated in a family with a desmin-related myopathy. Alternative splicing results in multiple transcript variants.

 Tel: 1-631-559-9269 1-516-512-3133

 Email: info@creative-biomart.com  Fax: 1-631-938-8127

 45-1 Ramsey Road, Shirley, NY 11967, USA

Form	25 mM Tris HCl, pH 7.3, 100 mM glycine, 10% glycerol.
Molecular Mass	20 kDa
AA Sequence	MDIAIHHPWIRRPFFPFHSPSRLFDQFFGEHLLESDFPTSTLSPFYLRPPSFLRAP SWFDTGLSEMRL EKDRFSVNLDVKHFSPEELKVKVLGDVIEVHGKHEERQDEHGFI SREFHRKYRIPADVDPLTITSSLSSD GVLTVNGPRKQVSGPERTIPITREEKPAVTAAPKKTRTRPLEQKLISEEDLAANDILDY KDDDDKV
Purity	> 80% as determined by SDS-PAGE and Coomassie blue staining.
Stability	Stable for 12 months from the date of receipt of the product under proper storage and handling conditions. Avoid repeated freeze-thaw cycles.
Storage	Store at -80 centigrade.
Concentration	>50 ug/mL as determined by microplate BCA method.
Preparation	Recombinant protein was captured through anti-DDK affinity column followed by conventional chromatography steps.
Full Length	Full L.

GENE INFORMATION

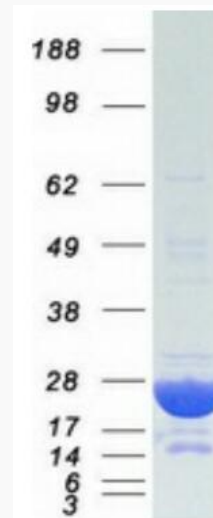
Gene Name	CRYAB crystallin alpha B [Homo sapiens (human)]
Official Symbol	CRYAB
Synonyms	MFM2; CRYA2; CTPP2; HSPB5; CMD11I; CTRCT16; HEL-S-101

 Tel: 1-631-559-9269 1-516-512-3133

 Email: info@creative-biomart.com  Fax: 1-631-938-8127

 45-1 Ramsey Road, Shirley, NY 11967, USA

Gene ID	1410
mRNA Refseq	NM_001885.3
Protein Refseq	NP_001876.1
MIM	123590
UniProt ID	P02511



Coomassie blue staining of purified CRYAB protein.

Tel: 1-631-559-9269 1-516-512-3133

Email: info@creative-biomart.com Fax: 1-631-938-8127

45-1 Ramsey Road, Shirley, NY 11967, USA