

Recombinant Human CRYAB Protein (Met1-Lys175), C-His tagged

Cat. No. CRYAB-1820H Lot. No. (See product label)

SPECIFICATION

Product Overview	Recombinant human CRYAB (Met1-Lys175) fused with C-terminal His tag was expressed in E. coli.
Species	Human
Source	E.coli
ProteinLength	Met1-Lys175
Form	Lyophilized powder/frozen liquid
Molecular Mass	19.25 kDa
Purity	>90% as determined by SDS-PAGE
Notes	For research use only.
Storage	Use a manual defrost freezer and avoid repeated freeze thaw cycles. Store at 2 to 8 centigrade for one week. Store at -20 to -80 centigrade for twelve months from the date of receipt.
Storage Buffer	Supplied as solution form in PBS or lyophilized from PBS.
Reconstitution	Reconstitute in sterile water for a stock solution.

 Tel: 1-631-559-9269 1-516-512-3133

 Email: info@creative-biomart.com  Fax: 1-631-938-8127

 45-1 Ramsey Road, Shirley, NY 11967, USA

Shipping They are shipped out with dry ice/blue ice unless customers require otherwise.

GENE INFORMATION

Gene Name CRYAB crystallin, alpha B [Homo sapiens (human)]

Official Symbol CRYAB

Synonyms CRYAB; crystallin, alpha B; CRYA2; alpha-crystallin B chain; HSPB5; heat shock protein beta-5; rosenthal fiber component; heat-shock 20 kD like-protein; renal carcinoma antigen NY-REN-27; CTPP2;

Gene ID 1410

mRNA Refseq NM_001885

Protein Refseq NP_001876

MIM 123590

UniProt ID P02511

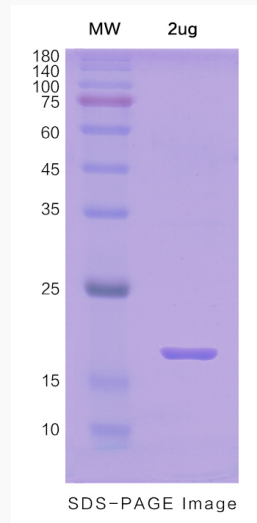
 Tel: 1-631-559-9269 1-516-512-3133

 Email: info@creative-biomart.com  Fax: 1-631-938-8127

 45-1 Ramsey Road, Shirley, NY 11967, USA



SDS-PAGE



Tel: 1-631-559-9269 1-516-512-3133

Email: info@creative-biomart.com Fax: 1-631-938-8127

45-1 Ramsey Road, Shirley, NY 11967, USA