

Recombinant Human CRYAB Protein, C-His-tagged

Cat. No. CRYAB-22H Lot. No. (See product label)

SPECIFICATION

Product Overview Recombinant Human CRYAB Protein, fused to His-tag, was expressed in E. coli.

Species Human

Source E.coli

ProteinLength 183aa

Description

Mammalian lens crystallins are divided into alpha, beta, and gamma families. Alpha crystallins are composed of two gene products: alpha-A and alpha-B, for acidic and basic, respectively. Alpha crystallins can be induced by heat shock and are members of the small heat shock protein (HSP20) family. They act as molecular chaperones although they do not renature proteins and release them in the fashion of a true chaperone; instead they hold them in large soluble aggregates. These heterogeneous aggregates consist of 30-40 subunits; the alpha-A and alpha-B subunits have a 3:1 ratio, respectively. Two additional functions of alpha crystallins are an autokinase activity and participation in the intracellular architecture. The encoded protein has been identified as a moonlighting protein based on its ability to perform mechanistically distinct functions. Alpha-A and alpha-B gene products are differentially expressed; alpha-A is preferentially restricted to the lens and alpha-B is expressed widely in many tissues and organs. Elevated expression of alpha-B crystallin occurs in many neurological diseases; a missense mutation cosegregated in a family with a desmin-related myopathy. Alternative splicing results in multiple transcript variants.

 Tel: 1-631-559-9269 1-516-512-3133

 Email: info@creative-biomart.com  Fax: 1-631-938-8127

 45-1 Ramsey Road, Shirley, NY 11967, USA

Form	Liquid in. Phosphate-Buffered Saline (pH 7.4) containing 10% glycerol.
Molecular Mass	21.2 kDa
AA Sequence	MDIAIHHPWI RRPFFPFHSP SRLFDQFFGE HLLSDFPT STSLSPFYLR PPSFLRAPSW FDTGLSEMRL EKDRFSVNLK VKHFSPEELK VKVLGDVIEV HGKHEERQDE HGFISREFHR KYRIPADVDP LTITSSLSSD GVLTVNGPRK QVSGPERTIP ITREEKPAVT AAPKK
N-terminal Sequence Analysis	1-175aa
Purity	> 90% by SDS-PAGE
Applications	SDS-PAGE
Usage	For research use only. This product is not intended or approved for human, diagnostics or veterinary use.
Storage	Can be stored at 2 centigrade to 8 centigrade for 1 week. For long term storage, aliquot and store at -20 centigrade to -80 centigrade. Avoid repeated freezing and thawing cycles.
Concentration	1mg/ml (determined by Bradford assay).

GENE INFORMATION

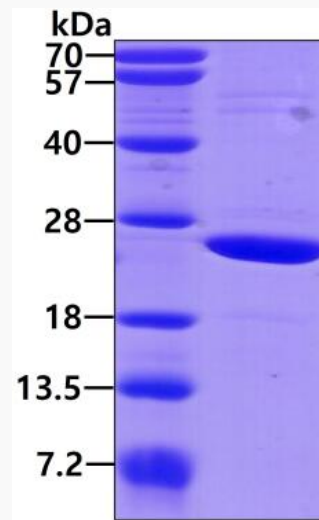
Gene Name	CRYAB crystallin alpha B [Homo sapiens (human)]
Official Symbol	CRYAB

 Tel: 1-631-559-9269 1-516-512-3133

 Email: info@creative-biomart.com  Fax: 1-631-938-8127

 45-1 Ramsey Road, Shirley, NY 11967, USA

Synonyms	MFM2; CRYA2; CTPP2; HSPB5; CMD1II; CTRCT16; HEL-S-101
Gene ID	1410
mRNA Refseq	NM_001885.3
Protein Refseq	NP_001876.1
MIM	123590
UniProt ID	P02511

SDS-PAGE

3ug by SDS-PAGE under reducing condition and visualized by coomassie blue stain.

 Tel: 1-631-559-9269 1-516-512-3133

 Email: info@creative-biomart.com  Fax: 1-631-938-8127

 45-1 Ramsey Road, Shirley, NY 11967, USA