

Recombinant Human CRYAB Protein, Myc/DDK-tagged, C13 and N15-labeled

Cat. No. CRYAB-3827H Lot. No. (See product label)

SPECIFICATION

Product Overview

CRYAB MS Standard C13 and N15-labeled recombinant protein (NP_001876) with a C-terminal MYC/DDK tag, was expressed in HEK293 cells.

Species

Human

Source

HEK293

Description

Mammalian lens crystallins are divided into alpha, beta, and gamma families. Alpha crystallins are composed of two gene products: alpha-A and alpha-B, for acidic and basic, respectively. Alpha crystallins can be induced by heat shock and are members of the small heat shock protein (HSP20) family. They act as molecular chaperones although they do not renature proteins and release them in the fashion of a true chaperone; instead they hold them in large soluble aggregates. These heterogeneous aggregates consist of 30-40 subunits; the alpha-A and alpha-B subunits have a 3:1 ratio, respectively. Two additional functions of alpha crystallins are an autokinase activity and participation in the intracellular architecture. The encoded protein has been identified as a moonlighting protein based on its ability to perform mechanistically distinct functions. Alpha-A and alpha-B gene products are differentially expressed; alpha-A is preferentially restricted to the lens and alpha-B is expressed widely in many tissues and organs. Elevated expression of alpha-B crystallin occurs in many neurological diseases; a missense mutation cosegregated in a family with a desmin-related myopathy. Alternative splicing results in multiple transcript variants.

 Tel: 1-631-559-9269 1-516-512-3133

 Email: info@creative-biomart.com  Fax: 1-631-938-8127

 45-1 Ramsey Road, Shirley, NY 11967, USA

Molecular Mass	20.2 kDa
AA Sequence	MDIAIHHPWIRRPFFPFHSPSRLFDQFFGEHLLESDFPTSTSLSPFYLRPPSFLRAP SWFDTGLSEMRLEKDRFSVNLDVKHFSPEELKVKVLGDVIEVHGKHEERQDEHGFI SREFHRKYRIPADVDPPLTITSSLSGDVLTVNGPRKQVSGPERTIPITREEKPAVTAA PKKTRTRPLEQKLISEEDLAANDILDYKDDDDKV
Purity	> 80% as determined by SDS-PAGE and Coomassie blue staining
Stability	Stable for 3 months from receipt of products under proper storage and handling conditions.
Storage	Store at -80 centigrade. Avoid repeated freeze-thaw cycles.
Concentration	50 µg/mL as determined by BCA
Storage Buffer	100 mM glycine, 25 mM Tris-HCl, pH 7.3.

GENE INFORMATION

Gene Name	CRYAB crystallin alpha B [Homo sapiens (human)]
Official Symbol	CRYAB
Synonyms	CRYAB; crystallin, alpha B; CRYA2; alpha-crystallin B chain; HSPB5; heat shock protein beta-5; rosenthal fiber component; heat-shock 20 kD like-protein; renal carcinoma antigen NY-REN-27; CTPP2;
Gene ID	1410
mRNA Refseq	NM_001885

 Tel: 1-631-559-9269 1-516-512-3133

 Email: info@creative-biomart.com  Fax: 1-631-938-8127

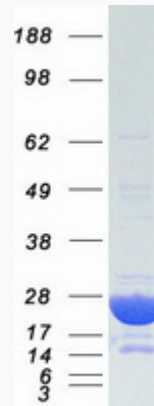
 45-1 Ramsey Road, Shirley, NY 11967, USA

Protein Refseq NP_001876

MIM 123590

UniProt ID P02511

SDS-PAGE



 Tel: 1-631-559-9269 1-516-512-3133

 Email: info@creative-biomart.com  Fax: 1-631-938-8127

 45-1 Ramsey Road, Shirley, NY 11967, USA