

## Recombinant Human CRYBA1 Protein, GST-tagged

Cat. No. CRYBA1-1927H Lot. No. (See product label)

### SPECIFICATION

#### Product Overview

Human CRYBA1 full-length ORF ( NP\_005199.2, 1 a.a. - 215 a.a.) recombinant protein with GST-tag at N-terminal.

#### Species

Human

#### Source

Wheat Germ

#### Description

Crystallins are separated into two classes: taxon-specific, or enzyme, and ubiquitous. The latter class constitutes the major proteins of vertebrate eye lens and maintains the transparency and refractive index of the lens. Since lens central fiber cells lose their nuclei during development, these crystallins are made and then retained throughout life, making them extremely stable proteins. Mammalian lens crystallins are divided into alpha, beta, and gamma families; beta and gamma crystallins are also considered as a superfamily. Alpha and beta families are further divided into acidic and basic groups. Seven protein regions exist in crystallins: four homologous motifs, a connecting peptide, and N- and C-terminal extensions. Beta-crystallins, the most heterogeneous, differ by the presence of the C-terminal extension (present in the basic group, none in the acidic group). Beta-crystallins form aggregates of different sizes and are able to self-associate to form dimers or to form heterodimers with other beta-crystallins. This gene, a beta acidic group member, encodes two proteins (crystallin, beta A3 and crystallin, beta A1) from a single mRNA, the latter protein is 17 aa shorter than crystallin, beta A3 and is generated by use of an alternate translation initiation site. Deletion of exons 3 and 4 causes the autosomal dominant disease 'zonular cataract with sutural opacities'. [provided by RefSeq, Jul

 Tel: 1-631-559-9269 1-516-512-3133

 Email: [info@creative-biomart.com](mailto:info@creative-biomart.com)  Fax: 1-631-938-8127

 45-1 Ramsey Road, Shirley, NY 11967, USA

	2008]
<b>Molecular Mass</b>	51.5 kDa
<b>AA Sequence</b>	METQAEQQELETLPPTTKMAQTNPPTGSLGPWKITIYDQENFQGKRMEFTSSCPNVS ERSFDNVRSCLKVESGAWIGYEHTSFCGQQFILERGEYPRWDAWSGSNAYHIERLM SFRPICSANHKESKMTIFEKENFIGRQWEISDDYPSLQAMGWFNNEVGSMKIQSGA WVCYQYPGYRGYQYILECDHHGGDYKHWREWGSHAQTSQIQSIRRIQQ
<b>Applications</b>	Enzyme-linked Immunoabsorbent Assay Western Blot (Recombinant protein) Antibody Production Protein Array
<b>Notes</b>	Best use within three months from the date of receipt of this protein.
<b>Storage</b>	Store at -80 centigrade. Aliquot to avoid repeated freezing and thawing.
<b>Storage Buffer</b>	50 mM Tris-HCl, 10 mM reduced Glutathione, pH=8.0 in the elution buffer.

## GENE INFORMATION

<b>Gene Name</b>	CRYBA1 crystallin, beta A1 [ Homo sapiens ]
<b>Official Symbol</b>	CRYBA1
<b>Synonyms</b>	CRYBA1; crystallin, beta A1; CRYB1; beta-crystallin A3; eye lens structural protein; crystallin, beta A3;
<b>Gene ID</b>	1411

 Tel: 1-631-559-9269 1-516-512-3133

 Email: [info@creative-biomart.com](mailto:info@creative-biomart.com)  Fax: 1-631-938-8127

 45-1 Ramsey Road, Shirley, NY 11967, USA

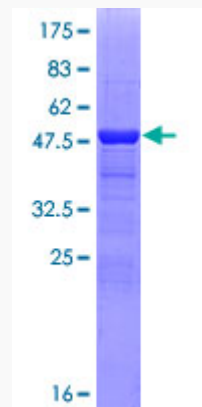
mRNA Refseq [NM\\_005208](#)

Protein Refseq [NP\\_005199](#)

MIM [123610](#)

UniProt ID [P05813](#)

**Quality Control  
Testing:**



12.5% SDS-PAGE Stained with Coomassie Blue.

 Tel: 1-631-559-9269 1-516-512-3133

 Email: [info@creative-biomart.com](mailto:info@creative-biomart.com)  Fax: 1-631-938-8127

 45-1 Ramsey Road, Shirley, NY 11967, USA