

Recombinant Human CRYBA4 Protein, GST-tagged

Cat. No. CRYBA4-1931H Lot. No. (See product label)

SPECIFICATION

Product Overview	Human CRYBA4 full-length ORF (NP_001877.1, 1 a.a. - 196 a.a.) recombinant protein with GST-tag at N-terminal.
Species	Human
Source	Wheat Germ
Description	<p>Crystallins are separated into two classes: taxon-specific, or enzyme, and ubiquitous. The latter class constitutes the major proteins of vertebrate eye lens and maintains the transparency and refractive index of the lens. Since lens central fiber cells lose their nuclei during development, these crystallins are made and then retained throughout life, making them extremely stable proteins. Mammalian lens crystallins are divided into alpha, beta, and gamma families; beta and gamma crystallins are also considered as a superfamily. Alpha and beta families are further divided into acidic and basic groups. Seven protein regions exist in crystallins: four homologous motifs, a connecting peptide, and N- and C-terminal extensions. Beta-crystallins, the most heterogeneous, differ by the presence of the C-terminal extension (present in the basic group, none in the acidic group). Beta-crystallins form aggregates of different sizes and are able to self-associate to form dimers or to form heterodimers with other beta-crystallins. This gene, a beta acidic group member, is part of a gene cluster with beta-B1, beta-B2, and beta-B3. [provided by RefSeq, Jul 2008]</p>
Molecular Mass	48.8 kDa

 Tel: 1-631-559-9269 1-516-512-3133

 Email: info@creative-biomart.com  Fax: 1-631-938-8127

 45-1 Ramsey Road, Shirley, NY 11967, USA

AA Sequence	MTLQCTKSAGPWKMVVWDEDGFQGRRHEFTAECPSVLELGFETVRSCLKVLSGAW VGFEHAGFQQQYILERGEYPSWDAWGGNTAYPAERLTSFRPAACANHRDSRLTI FEQENFLGKKGELSDDYPSLQAMGWEGNEVGSFHVHSGAWVCSQFPGYRGFQYV LECDHHS GDYKHFREWGSHAPTFQVQSIRRIQQ
Applications	Enzyme-linked Immunoabsorbent Assay Western Blot (Recombinant protein) Antibody Production Protein Array
Notes	Best use within three months from the date of receipt of this protein.
Storage	Store at -80 centigrade. Aliquot to avoid repeated freezing and thawing.
Storage Buffer	50 mM Tris-HCl, 10 mM reduced Glutathione, pH=8.0 in the elution buffer.

GENE INFORMATION

Gene Name	CRYBA4 crystallin, beta A4 [Homo sapiens]
Official Symbol	CRYBA4
Synonyms	CRYBA4; crystallin, beta A4; beta-crystallin A4; beta-A4 crystallin; eye lens structural protein; crystallin, beta polypeptide A4; MCOPCT4;
Gene ID	1413
mRNA Refseq	NM_001886
Protein Refseq	NP_001877

 Tel: 1-631-559-9269 1-516-512-3133

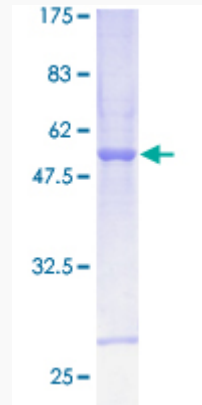
 Email: info@creative-biomart.com  Fax: 1-631-938-8127

 45-1 Ramsey Road, Shirley, NY 11967, USA

MIM 123631

UniProt ID P53673

**Quality Control
Testing:**



12.5% SDS-PAGE Stained with Coomassie Blue.

 Tel: 1-631-559-9269 1-516-512-3133

 Email: info@creative-biomart.com  Fax: 1-631-938-8127

 45-1 Ramsey Road, Shirley, NY 11967, USA