

Recombinant Human CRYBB1 Protein, GST-tagged

Cat. No. CRYBB1-1933H Lot. No. (See product label)

SPECIFICATION

Product Overview Human CRYBB1 full-length ORF (AAH36790.1, 1 a.a. - 252 a.a.) recombinant protein with GST-tag at N-terminal.

Species Human

Source Wheat Germ

Description Crystallins are separated into two classes: taxon-specific, or enzyme, and ubiquitous. The latter class constitutes the major proteins of vertebrate eye lens and maintains the transparency and refractive index of the lens. Since lens central fiber cells lose their nuclei during development, these crystallins are made and then retained throughout life, making them extremely stable proteins. Mammalian lens crystallins are divided into alpha, beta, and gamma families; beta and gamma crystallins are also considered as a superfamily. Alpha and beta families are further divided into acidic and basic groups. Seven protein regions exist in crystallins: four homologous motifs, a connecting peptide, and N- and C-terminal extensions. Beta-crystallins, the most heterogeneous, differ by the presence of the C-terminal extension (present in the basic group, none in the acidic group). Beta-crystallins form aggregates of different sizes and are able to self-associate to form dimers or to form heterodimers with other beta-crystallins. This gene, a beta basic group member, undergoes extensive cleavage at its N-terminal extension during lens maturation. It is also a member of a gene cluster with beta-A4, beta-B2, and beta-B3. [provided by RefSeq, Jul 2008]

 Tel: 1-631-559-9269 1-516-512-3133

 Email: info@creative-biomart.com  Fax: 1-631-938-8127

 45-1 Ramsey Road, Shirley, NY 11967, USA

Molecular Mass	53.46 kDa
AA Sequence	MSQAAKASASATVAVNPGPDTKGKGAPPAGTSPSPGTTLAPTTVPITSAKAAELPPG NYRLVVFELNFQGRRAEFSGECNLADRGFDRVRSIIVSAGPWVAFEQSNFRGEM FILEKGEYPRWNTWSSSYRSDRLMSFRPIKMDAQEHKISLFEGANFKGNTIEIQGDD APSLWVYGFSDRVGSVKVSSGTWVGYYQYPGYRGYQYLLEPGDFRHWNEWGAFQ PQMQLRRLRDKQWHLEGSFPVLATEPPK
Applications	Enzyme-linked Immunoabsorbent Assay Western Blot (Recombinant protein) Antibody Production Protein Array
Notes	Best use within three months from the date of receipt of this protein.
Storage	Store at -80 centigrade. Aliquot to avoid repeated freezing and thawing.
Storage Buffer	50 mM Tris-HCl, 10 mM reduced Glutathione, pH=8.0 in the elution buffer.
GENE INFORMATION	
Gene Name	CRYBB1 crystallin, beta B1 [Homo sapiens]
Official Symbol	CRYBB1
Synonyms	CRYBB1; crystallin, beta B1; beta-crystallin B1; beta-B1 crystallin; eye lens structural protein; CATCN3;
Gene ID	1414
mRNA Refseq	NM_001887

 Tel: 1-631-559-9269 1-516-512-3133

 Email: info@creative-biomart.com  Fax: 1-631-938-8127

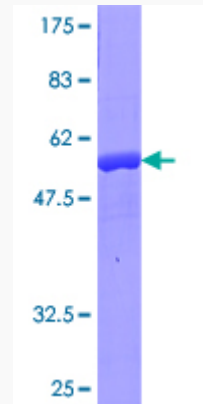
 45-1 Ramsey Road, Shirley, NY 11967, USA

Protein Refseq NP_001878

MIM 600929

UniProt ID P53674

Quality Control
Testing:



12.5% SDS-PAGE Stained with Coomassie Blue.

Tel: 1-631-559-9269 1-516-512-3133

Email: info@creative-biomart.com Fax: 1-631-938-8127

45-1 Ramsey Road, Shirley, NY 11967, USA