

Recombinant Human CRYBB1 Protein, Myc/DDK-tagged, C13 and N15-labeled

Cat. No. CRYBB1-4818H Lot. No. (See product label)

SPECIFICATION

Product Overview

CRYBB1 MS Standard C13 and N15-labeled recombinant protein (NP_001878) with a C-terminal MYC/DDK tag, was expressed in HEK293 cells.

Species

Human

Source

HEK293

Description

Crystallins are separated into two classes: taxon-specific, or enzyme, and ubiquitous. The latter class constitutes the major proteins of vertebrate eye lens and maintains the transparency and refractive index of the lens. Since lens central fiber cells lose their nuclei during development, these crystallins are made and then retained throughout life, making them extremely stable proteins. Mammalian lens crystallins are divided into alpha, beta, and gamma families; beta and gamma crystallins are also considered as a superfamily. Alpha and beta families are further divided into acidic and basic groups. Seven protein regions exist in crystallins: four homologous motifs, a connecting peptide, and N- and C-terminal extensions. Beta-crystallins, the most heterogeneous, differ by the presence of the C-terminal extension (present in the basic group, none in the acidic group). Beta-crystallins form aggregates of different sizes and are able to self-associate to form dimers or to form heterodimers with other beta-crystallins. This gene, a beta basic group member, undergoes extensive cleavage at its N-terminal extension during lens maturation. It is also a member of a gene cluster with beta-A4, beta-B2, and beta-B3.

 Tel: 1-631-559-9269 1-516-512-3133

 Email: info@creative-biomart.com  Fax: 1-631-938-8127

 45-1 Ramsey Road, Shirley, NY 11967, USA

Molecular Mass	28 kDa
AA Sequence	MSQAAKASASATVAVNPGPDTKGKGAPPAGTSPSPGTTLAPTTVPITSAKAAELPPG NYRLVVFELNFQGRRAEFSGECSNLADRGFDRVRSIIVSAGPWVAFEQSNFRGEM FILEKGEYPRWNTWSSSYRSDRLMSFRPIKMDAQEHKISLFEGANFKGNTIEIQGDD APSLWVYGFSDRVGSVKVSSGTWVGYYQYPGYRGYQYLLEPGDFRHWNEWGAFAQ PQMQLRRLRDKQWHLEGSFPVLATEPPKTRTRPLEQKLISEEDLAANDILDYKDDD DKV
Purity	> 80% as determined by SDS-PAGE and Coomassie blue staining
Stability	Stable for 3 months from receipt of products under proper storage and handling conditions.
Storage	Store at -80 centigrade. Avoid repeated freeze-thaw cycles.
Concentration	50 µg/mL as determined by BCA
Storage Buffer	100 mM glycine, 25 mM Tris-HCl, pH 7.3.

GENE INFORMATION

Gene Name	CRYBB1 crystallin beta B1 [Homo sapiens (human)]
Official Symbol	CRYBB1
Synonyms	CRYBB1; crystallin, beta B1; beta-crystallin B1; beta-B1 crystallin; eye lens structural protein; CATCN3;
Gene ID	1414

 Tel: 1-631-559-9269 1-516-512-3133

 Email: info@creative-biomart.com  Fax: 1-631-938-8127

 45-1 Ramsey Road, Shirley, NY 11967, USA

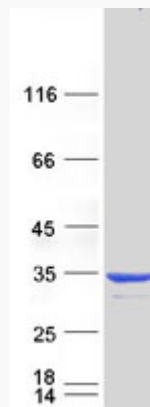
mRNA Refseq [NM_001887](#)

Protein Refseq [NP_001878](#)

MIM [600929](#)

UniProt ID [P53674](#)

SDS-PAGE



 Tel: 1-631-559-9269 1-516-512-3133

 Email: info@creative-biomart.com  Fax: 1-631-938-8127

 45-1 Ramsey Road, Shirley, NY 11967, USA