

Recombinant Human CRYBB2 Protein (Met1-Asn205), N-His tagged

Cat. No. CRYBB2-1823H Lot. No. (See product label)

SPECIFICATION

Product Overview	Recombinant human CRYBB2 (Met1-Asn205) fused with N-His tag was expressed in E. coli.
Species	Human
Source	E.coli
ProteinLength	Met1-Asn205
Form	Lyophilized powder/frozen liquid
Molecular Mass	25.69 kDa
Purity	>90% as determined by SDS-PAGE
Notes	For research use only.
Storage	Use a manual defrost freezer and avoid repeated freeze thaw cycles. Store at 2 to 8 centigrade for one week. Store at -20 to -80 centigrade for twelve months from the date of receipt.
Storage Buffer	0.01M PBS, pH 7.4, 0.02% NLS
Reconstitution	Reconstitute in sterile water for a stock solution.

 Tel: 1-631-559-9269 1-516-512-3133

 Email: info@creative-biomart.com  Fax: 1-631-938-8127

 45-1 Ramsey Road, Shirley, NY 11967, USA

Shipping

They are shipped out with dry ice/blue ice unless customers require otherwise.

GENE INFORMATION
Gene Name

CRYBB2 crystallin, beta B2 [Homo sapiens (human)]

Official Symbol

CRYBB2

Synonyms

CRYBB2; crystallin, beta B2; CCA2, CRYB2, CRYB2A; beta-crystallin B2; beta-B2 crystallin; beta-crystallin Bp; eye lens structural protein; CCA2; CRYB2; CRYB2A; D22S665;

Gene ID

1415

mRNA Refseq

NM_000496

Protein Refseq

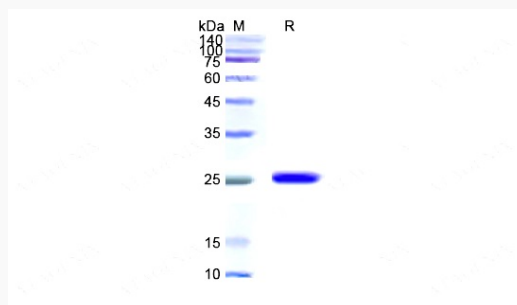
NP_000487

MIM

123620

UniProt ID

P43320

SDS-PAGE


 Tel: 1-631-559-9269 1-516-512-3133

 Email: info@creative-biomart.com  Fax: 1-631-938-8127

 45-1 Ramsey Road, Shirley, NY 11967, USA