

Recombinant Human CRYBB2 Protein, GST-tagged

Cat. No. CRYBB2-1935H Lot. No. (See product label)

SPECIFICATION

Product Overview Human CRYBB2 full-length ORF (NP_000487.1, 1 a.a. - 205 a.a.) recombinant protein with GST-tag at N-terminal.

Species Human

Source Wheat Germ

Description Crystallins are separated into two classes: taxon-specific, or enzyme, and ubiquitous. The latter class constitutes the major proteins of vertebrate eye lens and maintains the transparency and refractive index of the lens. Since lens central fiber cells lose their nuclei during development, these crystallins are made and then retained throughout life, making them extremely stable proteins. Mammalian lens crystallins are divided into alpha, beta, and gamma families; beta and gamma crystallins are also considered as a superfamily. Alpha and beta families are further divided into acidic and basic groups. Seven protein regions exist in crystallins: four homologous motifs, a connecting peptide, and N- and C-terminal extensions. Beta-crystallins, the most heterogeneous, differ by the presence of the C-terminal extension (present in the basic group, none in the acidic group). Beta-crystallins form aggregates of different sizes and are able to self-associate to form dimers or to form heterodimers with other beta-crystallins. This gene, a beta basic group member, is part of a gene cluster with beta-A4, beta-B1, and beta-B3. A chain-terminating mutation was found to cause type 2 cerulean cataracts. [provided by RefSeq, Jul 2008]

Molecular Mass 49.8 kDa

 Tel: 1-631-559-9269 1-516-512-3133

 Email: info@creative-biomart.com  Fax: 1-631-938-8127

 45-1 Ramsey Road, Shirley, NY 11967, USA

AA Sequence	MASDHQTQAGKPQSLNPKIIIFEQENFQGHSELNGPCPNLKETGVEKAGSVLVQA GPWVGYEQANCKGGEQVFVEKGEYPRWDSWTSSRRTDSLSSLRPIKVDSQEHIILY ENPNFTGKKMEIIDDDVPSFHAHGYQEKVSSVRVQSGTWVGYQYPGYRGLQYLLE KGDYKDSSDFGAPHPQVQSVRRIRDMQWHQRGAFHPSN
Applications	Enzyme-linked Immunoabsorbent Assay Western Blot (Recombinant protein) Antibody Production Protein Array
Notes	Best use within three months from the date of receipt of this protein.
Storage	Store at -80 centigrade. Aliquot to avoid repeated freezing and thawing.
Storage Buffer	50 mM Tris-HCl, 10 mM reduced Glutathione, pH=8.0 in the elution buffer.

GENE INFORMATION

Gene Name	CRYBB2 crystallin, beta B2 [Homo sapiens]
Official Symbol	CRYBB2
Synonyms	CRYBB2; crystallin, beta B2; CCA2, CRYB2, CRYB2A; beta-crystallin B2; beta-B2 crystallin; beta-crystallin Bp; eye lens structural protein; CCA2; CRYB2; CRYB2A; D22S665;
Gene ID	1415
mRNA Refseq	NM_000496
Protein Refseq	NP_000487

 Tel: 1-631-559-9269 1-516-512-3133

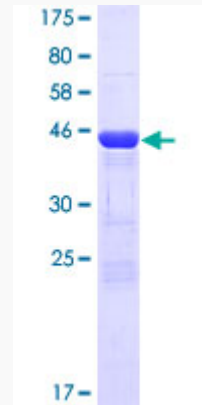
 Email: info@creative-biomart.com  Fax: 1-631-938-8127

 45-1 Ramsey Road, Shirley, NY 11967, USA

MIM 123620

UniProt ID P43320

**Quality Control
Testing:**



12.5% SDS-PAGE Stained with Coomassie Blue.

 Tel: 1-631-559-9269 1-516-512-3133

 Email: info@creative-biomart.com  Fax: 1-631-938-8127

 45-1 Ramsey Road, Shirley, NY 11967, USA