

## Recombinant Human CRYBB3 Protein, GST-tagged

Cat. No. CRYBB3-1936H Lot. No. (See product label)

### SPECIFICATION

**Product Overview** Human CRYBB3 full-length ORF ( AAI02022.1, 1 a.a. - 211 a.a.) recombinant protein with GST-tag at N-terminal.

**Species** Human

**Source** Wheat Germ

**Description** Crystallins are separated into two classes: taxon-specific, or enzyme, and ubiquitous. The latter class constitutes the major proteins of vertebrate eye lens and maintains the transparency and refractive index of the lens. Since lens central fiber cells lose their nuclei during development, these crystallins are made and then retained throughout life, making them extremely stable proteins. Mammalian lens crystallins are divided into alpha, beta, and gamma families; beta and gamma crystallins are also considered as a superfamily. Alpha and beta families are further divided into acidic and basic groups. Seven protein regions exist in crystallins: four homologous motifs, a connecting peptide, and N- and C-terminal extensions. Beta-crystallins, the most heterogeneous, differ by the presence of the C-terminal extension (present in the basic group, none in the acidic group). Beta-crystallins form aggregates of different sizes and are able to self-associate to form dimers or to form heterodimers with other beta-crystallins. This gene, a beta basic group member, is part of a gene cluster with beta-A4, beta-B1, and beta-B2. Mutations in this gene result in cataract congenital nuclear autosomal recessive type 2. [provided by RefSeq, Feb 2013]

**Molecular Mass** 50.6 kDa

 Tel: 1-631-559-9269 1-516-512-3133

 Email: [info@creative-biomart.com](mailto:info@creative-biomart.com)  Fax: 1-631-938-8127

 45-1 Ramsey Road, Shirley, NY 11967, USA

<b>AA Sequence</b>	MAEQHGAP EQAAAGKSHGDLGGSYKVILYELENFQGKRCELSAECPSLTDSLLEKV GSIQVESGPWLAFESRAFRGEQFVLEKGDYPRWDAWSNSRSDSLLSLQPLNIDSP DHKLHLFENPAFSGRKMEIVDDDVP SLWAHGFQDRVASVRAINGTWVGYEFPGYR GRQYVFERGEYRHWNEWDASQPQLQSVRRIRDQKWHKRGRFPSS
<b>Applications</b>	Enzyme-linked Immunoabsorbent Assay Western Blot (Recombinant protein) Antibody Production Protein Array
<b>Notes</b>	Best use within three months from the date of receipt of this protein.
<b>Storage</b>	Store at -80 centigrade. Aliquot to avoid repeated freezing and thawing.
<b>Storage Buffer</b>	50 mM Tris-HCl, 10 mM reduced Glutathione, pH=8.0 in the elution buffer.

## GENE INFORMATION

<b>Gene Name</b>	CRYBB3 crystallin, beta B3 [ Homo sapiens ]
<b>Official Symbol</b>	CRYBB3
<b>Synonyms</b>	CRYBB3; crystallin, beta B3; CRYB3; beta-crystallin B3; beta-B3 crystallin; eye lens structural protein; CATCN2; MGC125772; MGC125773; MGC125774;
<b>Gene ID</b>	1417
<b>mRNA Refseq</b>	NM_004076
<b>Protein Refseq</b>	NP_004067

 Tel: 1-631-559-9269 1-516-512-3133

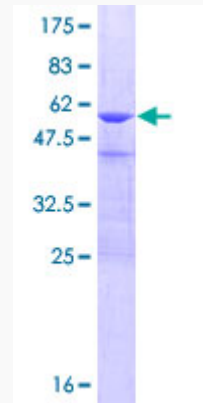
 Email: [info@creative-biomart.com](mailto:info@creative-biomart.com)  Fax: 1-631-938-8127

 45-1 Ramsey Road, Shirley, NY 11967, USA

**MIM** 123630

**UniProt ID** P26998

**Quality Control  
Testing:**



12.5% SDS-PAGE Stained with Coomassie Blue.

 Tel: 1-631-559-9269 1-516-512-3133

 Email: [info@creative-biomart.com](mailto:info@creative-biomart.com)  Fax: 1-631-938-8127

 45-1 Ramsey Road, Shirley, NY 11967, USA