

# Recombinant Human CRYBB3 Protein, Myc/DDK-tagged, C13 and N15-labeled

Cat. No. CRYBB3-2050H Lot. No. (See product label)

## SPECIFICATION

### Product Overview

CRYBB3 MS Standard C13 and N15-labeled recombinant protein (NP\_004067) with a C-terminal MYC/DDK tag, was expressed in HEK293 cells.

### Species

Human

### Source

HEK293

### Description

Crystallins are separated into two classes: taxon-specific, or enzyme, and ubiquitous. The latter class constitutes the major proteins of vertebrate eye lens and maintains the transparency and refractive index of the lens. Since lens central fiber cells lose their nuclei during development, these crystallins are made and then retained throughout life, making them extremely stable proteins. Mammalian lens crystallins are divided into alpha, beta, and gamma families; beta and gamma crystallins are also considered as a superfamily. Alpha and beta families are further divided into acidic and basic groups. Seven protein regions exist in crystallins: four homologous motifs, a connecting peptide, and N- and C-terminal extensions. Beta-crystallins, the most heterogeneous, differ by the presence of the C-terminal extension (present in the basic group, none in the acidic group). Beta-crystallins form aggregates of different sizes and are able to self-associate to form dimers or to form heterodimers with other beta-crystallins. This gene, a beta basic group member, is part of a gene cluster with beta-A4, beta-B1, and beta-B2. Mutations in this gene result in cataract congenital nuclear autosomal recessive type 2.

 Tel: 1-631-559-9269 1-516-512-3133

 Email: [info@creative-biomart.com](mailto:info@creative-biomart.com)  Fax: 1-631-938-8127

 45-1 Ramsey Road, Shirley, NY 11967, USA

<b>Molecular Mass</b>	24.2 kDa
<b>AA Sequence</b>	MAEQHGAPAEQAAAGKSHGDLGGSYKVILYELENFQGKRCELSAECPSLTDSLLEKV GSIQVESGPWLAFESRAFGEQFVLEKGDYPRWDAWSNSRSDSLLSLQPLNIDSP DHKLHLFENPAFSGRKMEIVDDDVP SLWAHGFQDRVASVRAINGTWVGYEFPGYR GRQYVFERGEYRHWNEW DASQPQLQSVRRIRDQKWHKRGRFPSSTRTRPLEQKLI SEEDLAANDILDYKDDDDKV
<b>Purity</b>	> 80% as determined by SDS-PAGE and Coomassie blue staining
<b>Stability</b>	Stable for 3 months from receipt of products under proper storage and handling conditions.
<b>Storage</b>	Store at -80 centigrade. Avoid repeated freeze-thaw cycles.
<b>Concentration</b>	50 µg/mL as determined by BCA
<b>Storage Buffer</b>	100 mM glycine, 25 mM Tris-HCl, pH 7.3.

## GENE INFORMATION

<b>Gene Name</b>	CRYBB3 crystallin beta B3 [ Homo sapiens (human) ]
<b>Official Symbol</b>	CRYBB3
<b>Synonyms</b>	CRYBB3; crystallin, beta B3; CRYB3; beta-crystallin B3; beta-B3 crystallin; eye lens structural protein; CATCN2; MGC125772; MGC125773; MGC125774;
<b>Gene ID</b>	1417
<b>mRNA Refseq</b>	NM_004076

 Tel: 1-631-559-9269 1-516-512-3133

 Email: [info@creative-biomart.com](mailto:info@creative-biomart.com)  Fax: 1-631-938-8127

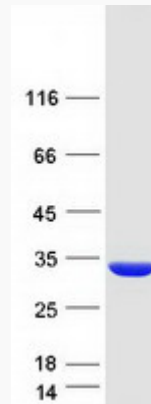
 45-1 Ramsey Road, Shirley, NY 11967, USA

**Protein Refseq** NP\_004067

**MIM** 123630

**UniProt ID** P26998

**SDS-PAGE**



 Tel: 1-631-559-9269 1-516-512-3133

 Email: [info@creative-biomart.com](mailto:info@creative-biomart.com)  Fax: 1-631-938-8127

 45-1 Ramsey Road, Shirley, NY 11967, USA