

Recombinant Human CRYGB Protein, GST-tagged

Cat. No. CRYGB-1938H Lot. No. (See product label)

SPECIFICATION

Product Overview Human CRYGB partial ORF (NP_005201.1, 76 a.a. - 175 a.a.) recombinant protein with GST-tag at N-terminal.

Species Human

Source Wheat Germ

Description Crystallins are separated into two classes: taxon-specific, or enzyme, and ubiquitous. The latter class constitutes the major proteins of vertebrate eye lens and maintains the transparency and refractive index of the lens. Since lens central fiber cells lose their nuclei during development, these crystallins are made and then retained throughout life, making them extremely stable proteins. Mammalian lens crystallins are divided into alpha, beta, and gamma families; beta and gamma crystallins are also considered as a superfamily. Alpha and beta families are further divided into acidic and basic groups. Seven protein regions exist in crystallins: four homologous motifs, a connecting peptide, and N- and C-terminal extensions. Gamma-crystallins are a homogeneous group of highly symmetrical, monomeric proteins typically lacking connecting peptides and terminal extensions. They are differentially regulated after early development. Four gamma-crystallin genes (gamma-A through gamma-D) and three pseudogenes (gamma-E, gamma-F, gamma-G) are tandemly organized in a genomic segment as a gene cluster. Whether due to aging or mutations in specific genes, gamma-crystallins have been involved in cataract formation. [provided by RefSeq, Jul 2008]

 Tel: 1-631-559-9269 1-516-512-3133

 Email: info@creative-biomart.com  Fax: 1-631-938-8127

 45-1 Ramsey Road, Shirley, NY 11967, USA

Molecular Mass	36.52 kDa
AA Sequence	IRSCCLIPPHSGAYRMKIYDRDELRGQMSELTDDCLSVQDRFHLTEIHSLNVLEGSWI LYEMPNYRGRQYLLRPGEYRRFLDWGAPNAKVGLRRVMDLY
Applications	Enzyme-linked Immunoabsorbent Assay Western Blot (Recombinant protein) Antibody Production Protein Array
Notes	Best use within three months from the date of receipt of this protein.
Storage	Store at -80 centigrade. Aliquot to avoid repeated freezing and thawing.
Storage Buffer	50 mM Tris-HCl, 10 mM reduced Glutathione, pH=8.0 in the elution buffer.

GENE INFORMATION

Gene Name	CRYGB crystallin, gamma B [Homo sapiens]
Official Symbol	CRYGB
Synonyms	CRGB_HUMAN; Crygb; Gamma-B-crystallin; Gamma-crystallin 1-2; Gamma-crystallin B; crystallin, gamma B; Gamma-crystallin 1-2; CRYGB
Gene ID	1419
mRNA Refseq	NM_005210.3
Protein Refseq	NP_005201.2

 Tel: 1-631-559-9269 1-516-512-3133

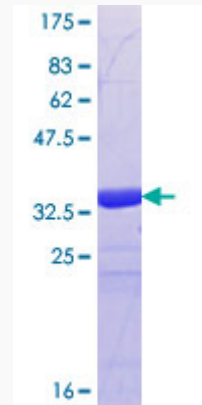
 Email: info@creative-biomart.com  Fax: 1-631-938-8127

 45-1 Ramsey Road, Shirley, NY 11967, USA

MIM 123670

UniProt ID P07316

**Quality Control
Testing:**



12.5% SDS-PAGE Stained with Coomassie Blue.

 Tel: 1-631-559-9269 1-516-512-3133

 Email: info@creative-biomart.com  Fax: 1-631-938-8127

 45-1 Ramsey Road, Shirley, NY 11967, USA