

Recombinant Rat CRYGB Protein (2-175 aa), His-tagged

Cat. No. CRYGB-2228R **Lot. No.** (See product label)

SPECIFICATION

Product Overview	Recombinant Rat CRYGB Protein (2-175 aa) is produced by Yeast expression system. This protein is fused with a 6xHis tag at the N-terminal. Research Area: Neuroscience. Protein Description: Full Length of Mature Protein.
Species	Rat
Source	Yeast
ProteinLength	2-175 aa
Description	Crystallins are the dominant structural components of the vertebrate eye lens.
Form	Tris-based buffer, 50% glycerol
Molecular Mass	23.0 kDa
AA Sequence	GKITFFEDRGRFQGRCYECSSDCPNLQTYFSRCNSVRVDSGCWMLYERP NYQGHQ YFLRRGDYDPD YQQWGMGFSDSIRSCR LIPQHSGTYRMRIYERDDFRGQMSEITDDCL SLQDRFHLSEIHSLNVMEGCWVLYEMPSYRGRQYLLRPGEYRRYLDWGAANAKVG SFRRVMDFY
Purity	> 90% as determined by SDS-PAGE.
Notes	Repeated freezing and thawing is not recommended. Store working aliquots at 4 centigrade for up to one week.

 Tel: 1-631-559-9269 1-516-512-3133

 Email: info@creative-biomart.com  Fax: 1-631-938-8127

 45-1 Ramsey Road, Shirley, NY 11967, USA

Storage

The shelf life is related to many factors, storage state, buffer ingredients, storage temperature and the stability of the protein itself. Generally, the shelf life of liquid form is 6 months at -20 centigrade/-80 centigrade. The shelf life of lyophilized form is 12 months at -20 centigrade/-80 centigrade.

Concentration

A hardcopy of COA will be sent along with the products. Please refer to it for detailed information.

GENE INFORMATION

Gene Name

Crygb crystallin, gamma B [*Rattus norvegicus* (Norway rat)]

Official Symbol

CRYGB

Synonyms

Crygb; Len; Cryg2;

Gene ID

301468

mRNA Refseq

NM_001109875

Protein Refseq

NP_001103345

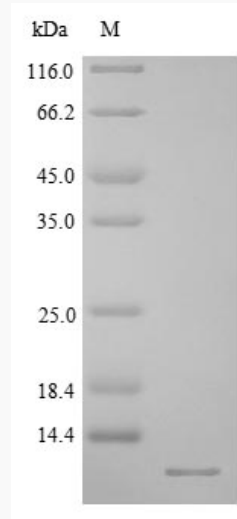
UniProt ID

P10066

 Tel: 1-631-559-9269 1-516-512-3133

 Email: info@creative-biomart.com  Fax: 1-631-938-8127

 45-1 Ramsey Road, Shirley, NY 11967, USA



(Tris-Glycine gel) Discontinuous SDS-PAGE (reduced) with 5% enrichment gel and 15% separation gel.

 Tel: 1-631-559-9269 1-516-512-3133

 Email: info@creative-biomart.com  Fax: 1-631-938-8127

 45-1 Ramsey Road, Shirley, NY 11967, USA