

Recombinant Human CRYGC Protein, GST-tagged

Cat. No. CRYGC-1939H **Lot. No.** (See product label)

SPECIFICATION

Product Overview	Human CRYGC partial ORF (NP_066269, 75 a.a. - 174 a.a.) recombinant protein with GST-tag at N-terminal.
Species	Human
Source	Wheat Germ
Description	This gene encodes a member of the beta/gamma-crystallin family of proteins. Crystallins constitute the major proteins of vertebrate eye lens and maintain the transparency and refractive index of the lens. This gene and several family members are present in a gene cluster on chromosome 2. Mutations in this gene have been shown to cause multiple types of cataract, including Coppock-like cataract and zonular pulverulent cataract, among others. [provided by RefSeq, Jan 2015]
Molecular Mass	36.74 kDa
AA Sequence	SIRSCCLIPQTVSHRLRLYEREDHKGLMMELSEDPCSIQDRFHLSEIRSLHVLEGCVLYELPNYRGRQYLLRPQEYRRCQDWGAMDAKAGSLRRVVDLY
Applications	Enzyme-linked Immunoabsorbent Assay Western Blot (Recombinant protein) Antibody Production Protein Array
Notes	Best use within three months from the date of receipt of this protein.

 Tel: 1-631-559-9269 1-516-512-3133

 Email: info@creative-biomart.com  Fax: 1-631-938-8127

 45-1 Ramsey Road, Shirley, NY 11967, USA

Storage Store at -80 centigrade. Aliquot to avoid repeated freezing and thawing.

Storage Buffer 50 mM Tris-HCl, 10 mM reduced Glutathione, pH=8.0 in the elution buffer.

GENE INFORMATION

Gene Name CRYGC crystallin, gamma C [Homo sapiens]

Official Symbol CRYGC

Synonyms CRYGC; crystallin, gamma C; CRYG3; gamma-crystallin C; gamma-C-crystallin; gamma-crystallin 3; crystallin, gamma-3; gamma-crystallin 2-1; CCL;

Gene ID 1420

mRNA Refseq NM_020989

Protein Refseq NP_066269

MIM 123680

UniProt ID P07315

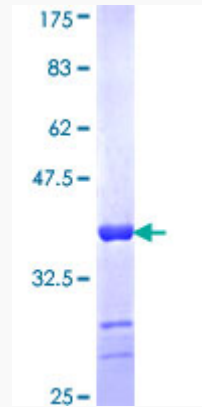
 Tel: 1-631-559-9269 1-516-512-3133

 Email: info@creative-biomart.com  Fax: 1-631-938-8127

 45-1 Ramsey Road, Shirley, NY 11967, USA

Quality Control

Testing:



12.5% SDS-PAGE Stained with Coomassie Blue.

 Tel: 1-631-559-9269 1-516-512-3133

 Email: info@creative-biomart.com  Fax: 1-631-938-8127

 45-1 Ramsey Road, Shirley, NY 11967, USA