

# Recombinant Human CRYGC Protein, Myc/DDK-tagged, C13 and N15-labeled

**Cat. No.** CRYGC-2971H    **Lot. No.** (See product label)

## SPECIFICATION

<b>Product Overview</b>	CRYGC MS Standard C13 and N15-labeled recombinant protein (NP_066269) with a C-terminal MYC/DDK tag, was expressed in HEK293 cells.
<b>Species</b>	Human
<b>Source</b>	HEK293
<b>Description</b>	This gene encodes a member of the beta/gamma-crystallin family of proteins. Crystallins constitute the major proteins of vertebrate eye lens and maintain the transparency and refractive index of the lens. This gene and several family members are present in a gene cluster on chromosome 2. Mutations in this gene have been shown to cause multiple types of cataract, including Coppock-like cataract and zonular pulverulent cataract, among others.
<b>Molecular Mass</b>	20.9 kDa
<b>AA Sequence</b>	MGKITFYEDRAFQGRSYETTTDCPNLQPYFSRCNSIRVESGCWMLYERP NYQGGQ YLLRRGEYPDYQQWMGLSDSIRSCCLIPQTVSHRLRLYEREDHKGLMMELSEDCPS IQDRFHLSEIRSLHVLEGCWVLYELPNYRGRQYLLRPQEYRRCQDWGAMDAKAGS LRRVVDLYTRTRPLEQKLISEEDLAANDILDYKDDDDKV
<b>Purity</b>	> 80% as determined by SDS-PAGE and Coomassie blue staining
<b>Stability</b>	Stable for 3 months from receipt of products under proper storage and handling

 Tel: 1-631-559-9269    1-516-512-3133

 Email: [info@creative-biomart.com](mailto:info@creative-biomart.com)     Fax: 1-631-938-8127

 45-1 Ramsey Road, Shirley, NY 11967, USA

conditions.

**Storage** Store at -80 centigrade. Avoid repeated freeze-thaw cycles.

**Concentration** 50 µg/mL as determined by BCA

**Storage Buffer** 100 mM glycine, 25 mM Tris-HCl, pH 7.3.

## GENE INFORMATION

**Gene Name** CRYGC crystallin gamma C [ Homo sapiens (human) ]

**Official Symbol** CRYGC

**Synonyms** CRYGC; crystallin, gamma C; CRYG3; gamma-crystallin C; gamma-C-crystallin; gamma-crystallin 3; crystallin, gamma-3; gamma-crystallin 2-1; CCL;

**Gene ID** 1420

**mRNA Refseq** NM\_020989

**Protein Refseq** NP\_066269

**MIM** 123680

**UniProt ID** P07315

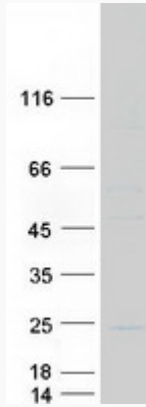
 Tel: 1-631-559-9269 1-516-512-3133

 Email: [info@creative-biomart.com](mailto:info@creative-biomart.com)  Fax: 1-631-938-8127

 45-1 Ramsey Road, Shirley, NY 11967, USA



**SDS-PAGE**



Tel: 1-631-559-9269 1-516-512-3133

Email: [info@creative-biomart.com](mailto:info@creative-biomart.com) Fax: 1-631-938-8127

45-1 Ramsey Road, Shirley, NY 11967, USA