

Recombinant Human CRYGC protein, His-tagged

Cat. No. CRYGC-4477H Lot. No. (See product label)

SPECIFICATION

Product Overview	Recombinant Human CRYGCprotein(P07315)(189aa), fused with N-terminal His tag, was expressed in E. coli.
Species	Human
Source	E.coli
ProteinLength	189aa(including fusion tag)
Tag	N-His
Form	1XPBS.
Molecular Mass	22.8kDa(including fusion tag)
Storage	Store at -80°C and avoid repeated freeze-thaw cycles.
Reconstitution	It is recommended that sterile water be added to the vial to prepare a stock solution of 0.2 ug/ul. Centrifuge the vial at 4°C before opening to recover the entire contents.

GENE INFORMATION

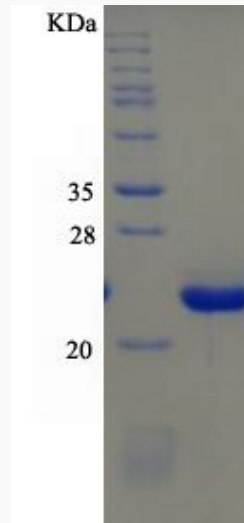
Gene Name	CRYGC crystallin, gamma C [Homo sapiens]
Official Symbol	CRYGC

 Tel: 1-631-559-9269 1-516-512-3133

 Email: info@creative-biomart.com  Fax: 1-631-938-8127

 45-1 Ramsey Road, Shirley, NY 11967, USA

Synonyms	CRYGC; crystallin, gamma C; CRYG3; gamma-crystallin C; gamma-C-crystallin; gamma-crystallin 3; crystallin, gamma-3; gamma-crystallin 2-1; CCL;
Gene ID	1420
mRNA Refseq	NM_020989
Protein Refseq	NP_066269
UniProt ID	P07315

SDS-PAGE

 Tel: 1-631-559-9269 1-516-512-3133

 Email: info@creative-biomart.com  Fax: 1-631-938-8127

 45-1 Ramsey Road, Shirley, NY 11967, USA