

Recombinant Human CRYGS Protein, GST-tagged

Cat. No. CRYGS-1942H Lot. No. (See product label)

SPECIFICATION

Product Overview Human CRYGS full-length ORF (NP_060011.1, 1 a.a. - 178 a.a.) recombinant protein with GST-tag at N-terminal.

Species Human

Source Wheat Germ

Description Crystallins are separated into two classes: taxon-specific, or enzyme, and ubiquitous. The latter class constitutes the major proteins of vertebrate eye lens and maintains the transparency and refractive index of the lens. Since lens central fiber cells lose their nuclei during development, these crystallins are made and then retained throughout life, making them extremely stable proteins. Mammalian lens crystallins are divided into alpha, beta, and gamma families; beta and gamma crystallins are also considered as a superfamily. Alpha and beta families are further divided into acidic and basic groups. Seven protein regions exist in crystallins: four homologous motifs, a connecting peptide, and N- and C-terminal extensions. Gamma-crystallins are a homogeneous group of highly symmetrical, monomeric proteins typically lacking connecting peptides and terminal extensions. They are differentially regulated after early development. This gene encodes a protein initially considered to be a beta-crystallin but the encoded protein is monomeric and has greater sequence similarity to other gamma-crystallins. This gene encodes the most significant gamma-crystallin in adult eye lens tissue. Whether due to aging or mutations in specific genes, gamma-crystallins have been involved in cataract formation. [provided by RefSeq, Jul 2008]

 Tel: 1-631-559-9269 1-516-512-3133

 Email: info@creative-biomart.com  Fax: 1-631-938-8127

 45-1 Ramsey Road, Shirley, NY 11967, USA

Molecular Mass	47.4 kDa
AA Sequence	MSKTGTKITFYEDKNFQGRRYDCDCDCADFHTYLSRCNSIKVEGGTWAVYERP NFA GYMYILPQGEYPEYQRWMGLNDRLLSSCRAVHLPSGGQYKIQIFEKGFSGQMYET TEDCPSIMEQFHMREIHSCKVLEGVWIFYELPNYRGRQYLLDKKEYRKPIDWGAASP AVQSFRRIVE
Applications	Enzyme-linked Immunoabsorbent Assay Western Blot (Recombinant protein) Antibody Production Protein Array
Notes	Best use within three months from the date of receipt of this protein.
Storage	Store at -80 centigrade. Aliquot to avoid repeated freezing and thawing.
Storage Buffer	50 mM Tris-HCl, 10 mM reduced Glutathione, pH=8.0 in the elution buffer.

GENE INFORMATION

Gene Name	CRYGS crystallin, gamma S [Homo sapiens]
Official Symbol	CRYGS
Synonyms	CRYGS; crystallin, gamma S; CRYG8; beta-crystallin S; crystallin; gamma 8; gamma-S-crystallin; gamma-crystallin S; crystallin, gamma 8;
Gene ID	1427
mRNA Refseq	NM_017541

 Tel: 1-631-559-9269 1-516-512-3133

 Email: info@creative-biomart.com  Fax: 1-631-938-8127

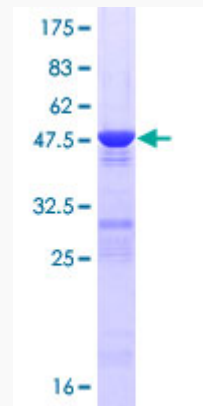
 45-1 Ramsey Road, Shirley, NY 11967, USA

Protein Refseq NP_060011

MIM 123730

UniProt ID P22914

**Quality Control
Testing:**



12.5% SDS-PAGE Stained with Coomassie Blue.

 Tel: 1-631-559-9269 1-516-512-3133

 Email: info@creative-biomart.com  Fax: 1-631-938-8127

 45-1 Ramsey Road, Shirley, NY 11967, USA