

Recombinant Human CRYL1 protein, His & S-tagged

Cat. No. CRYL1-1449H Lot. No. (See product label)

SPECIFICATION

Product Overview	Recombinant Human CRYL1 aa. (Met1~Gln319 (Accession # Q9Y2S2) fused with N-terminal His & S tag was produced in E. coli cells.
Species	Human
Source	E.coli
ProteinLength	Met1~Gln319
Description	The uronate cycle functions as an alternative glucose metabolic pathway, accounting for about 5% of daily glucose catabolism. The product of this gene catalyzes the dehydrogenation of L-gulonate into dehydro-L-gulonate in the uronate cycle. The enzyme requires NAD(H) as a coenzyme, and is inhibited by inorganic phosphate. A similar gene in the rabbit is thought to serve a structural role in the lens of the eye.
Form	Freeze-dried powder
Molecular Mass	Predicted Molecular Mass: 41.1kDa.
Endotoxin	<1.0EU per 1g (determined by the LAL method)
Purity	>95%
Characteristic	The isoelectric point is 5.8.

 Tel: 1-631-559-9269 1-516-512-3133

 Email: info@creative-biomart.com  Fax: 1-631-938-8127

 45-1 Ramsey Road, Shirley, NY 11967, USA

Applications	SDS-PAGE; WB; ELISA; IP.
Stability	The thermal stability is described by the loss rate of the target protein. The loss rate was determined by accelerated thermal degradation test, that is, incubate the protein at 37°C for 48h, and no obvious degradation and precipitation were observed. (Referring from China Biological Products Standard, which was calculated by the Arrhenius equation.) The loss of this protein is less than 5% within the expiration date under appropriate storage condition.
Storage	Avoid repeated freeze/thaw cycles. Store at 2-8°C for one month. Aliquot and store at -80°C for 12 months.
Storage buffer	Supplied as lyophilized form in PBS, pH7.4, containing 5% trehalose, 0.01% sarcosyl.
Reconstitution	Reconstitute in sterile PBS, pH7.2-pH7.4.

GENE INFORMATION

Gene Name	CRYL1 crystallin lambda 1 [Homo sapiens (human)]
Official Symbol	CRYL1
Synonyms	CRYL1; crystallin lambda 1; GDH; HEL30; lambda-CRY; lambda-crystallin homolog; L-gulonate 3-dehydrogenase; crystallin, lamda 1; epididymis luminal protein 30; gul3DH; testicular tissue protein Li 44
Gene ID	51084
mRNA Refseq	NM_015974.2
Protein Refseq	NP_057058.2

 Tel: 1-631-559-9269 1-516-512-3133

 Email: info@creative-biomart.com  Fax: 1-631-938-8127

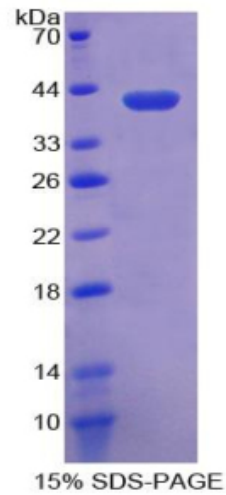
 45-1 Ramsey Road, Shirley, NY 11967, USA



UniProt ID

Q9Y2S2

SDS-PAGE



Tel: 1-631-559-9269 1-516-512-3133

Email: info@creative-biomart.com Fax: 1-631-938-8127

45-1 Ramsey Road, Shirley, NY 11967, USA