

Recombinant Human CRYL1 Protein, Myc/DDK-tagged, C13 and N15-labeled

Cat. No. CRYL1-3733H Lot. No. (See product label)

SPECIFICATION

Product Overview

CRYL1 MS Standard C13 and N15-labeled recombinant protein (NP_057058) with a C-terminal MYC/DDK tag, was expressed in HEK293 cells.

Species

Human

Source

HEK293

Description

The uronate cycle functions as an alternative glucose metabolic pathway, accounting for about 5% of daily glucose catabolism. The product of this gene catalyzes the dehydrogenation of L-gulonate into dehydro-L-gulonate in the uronate cycle. The enzyme requires NAD(H) as a coenzyme, and is inhibited by inorganic phosphate. A similar gene in the rabbit is thought to serve a structural role in the lens of the eye.

Molecular Mass

35.2 kDa

AA Sequence

MASSAAGCVVIVGSGVIGRSWAMLFASGGFQVKLYDIEQQQIRNALENIRKEMKLL
 QAGSLKGSLSVEEQLSLISGCPNIQEAVEGAMHIQECVPEDLELKKKIFAQLDSIIDR
 VILSSSTSCLMPSKLFAGLVHVKQCIVAHVPPYYIPLVELVPHPETAPTTVDRTHAL
 MKKIGQCMPRVQKEVAGFVLNRLQYAIISEAWRLVEEGIVSPSDLVLMSEGLGMRY
 AFIGPLETMHLNAEGMLSICYDRYSEGIKHVLQTFGPIPEFSRATAEKVNQDMCMKVP
 DDPEHLAARRQWRDECLMRLAKLKSQVQPQTRTRPLEQKLISEEDLAANDILDYKD
 DDDKV

Purity

> 80% as determined by SDS-PAGE and Coomassie blue staining

 Tel: 1-631-559-9269 1-516-512-3133

 Email: info@creative-biomart.com  Fax: 1-631-938-8127

 45-1 Ramsey Road, Shirley, NY 11967, USA

Stability	Stable for 3 months from receipt of products under proper storage and handling conditions.
Storage	Store at -80 centigrade. Avoid repeated freeze-thaw cycles.
Concentration	50 µg/mL as determined by BCA
Storage Buffer	100 mM glycine, 25 mM Tris-HCl, pH 7.3.

GENE INFORMATION

Gene Name	CRYL1 crystallin lambda 1 [Homo sapiens (human)]
Official Symbol	CRYL1
Synonyms	CRYL1; crystallin, lambda 1; GDH; HEL30; gul3DH; lambda-CRY; lambda-crystallin homolog; L-gulonate 3-dehydrogenase; crystallin, lamda 1; epididymis luminal protein 30; testicular tissue protein Li 44; EC 1.1.1.45
Gene ID	51084
mRNA Refseq	NM_015974
Protein Refseq	NP_057058
MIM	609877
UniProt ID	Q9Y2S2

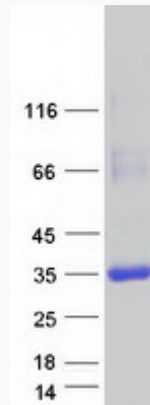
 Tel: 1-631-559-9269 1-516-512-3133

 Email: info@creative-biomart.com  Fax: 1-631-938-8127

 45-1 Ramsey Road, Shirley, NY 11967, USA



SDS-PAGE



Tel: 1-631-559-9269 1-516-512-3133

Email: info@creative-biomart.com Fax: 1-631-938-8127

45-1 Ramsey Road, Shirley, NY 11967, USA