

Recombinant Human CRYM Protein, GST-tagged

Cat. No. CRYM-1945H Lot. No. (See product label)

SPECIFICATION

Product Overview	Human CRYM full-length ORF (AAH18061, 1 a.a. - 314 a.a.) recombinant protein with GST-tag at N-terminal.
Species	Human
Source	Wheat Germ
Description	<p>Crystallins are separated into two classes: taxon-specific and ubiquitous. The former class is also called phylogenetically-restricted crystallins. The latter class constitutes the major proteins of vertebrate eye lens and maintains the transparency and refractive index of the lens. This gene encodes a taxon-specific crystallin protein that binds NADPH and has sequence similarity to bacterial ornithine cyclodeaminases. The encoded protein does not perform a structural role in lens tissue, and instead it binds thyroid hormone for possible regulatory or developmental roles. Mutations in this gene have been associated with autosomal dominant non-syndromic deafness. [provided by RefSeq, Sep 2014]</p>
Molecular Mass	60.28 kDa
AA Sequence	<pre>MSRVPAFLSAAEVEEHLRSSSLIPPLETALANFSSGPEGGVMQPVRTVVPVTKHRG YLGVMPAYSAEDALTTKLVTFFYEDRGITSVVPSHQATVLLFEPSNGTLLAVMDGNVI TAKRRTAAVSAIATKFLKPPSSEVLCILGAGVQAYSHYEIFTEQFSFKEVRIWNRTKEN AEKFADTVQGEVRVCSSVQEAVAGADVITVTLATEPILFGEWVKPGAHINAVGASRP DWRELDDELMKEAVLYVDSQEAALKESGDVLLSGAEIFAELGEVIKGVKPAHCEKTT</pre>

 Tel: 1-631-559-9269 1-516-512-3133

 Email: info@creative-biomart.com  Fax: 1-631-938-8127

 45-1 Ramsey Road, Shirley, NY 11967, USA

VFKSLGMAVEDTVAAKLIYDSWSSGK

Applications

Enzyme-linked Immunoabsorbent Assay
 Western Blot (Recombinant protein)
 Antibody Production
 Protein Array

Notes

Best use within three months from the date of receipt of this protein.

Storage

Store at -80 centigrade. Aliquot to avoid repeated freezing and thawing.

Storage Buffer

50 mM Tris-HCl, 10 mM reduced Glutathione, pH=8.0 in the elution buffer.

GENE INFORMATION

Gene Name

CRYM crystallin, mu [Homo sapiens]

Official Symbol

CRYM

Synonyms

CRYM; crystallin, mu; thiomorpholine-carboxylate dehydrogenase; DFNA40; ketimine reductase; mu-crystallin homolog; NADP-regulated thyroid-hormone binding protein; THBP;

Gene ID

1428

mRNA Refseq

NM_001014444

Protein Refseq

NP_001014444

MIM

123740

 Tel: 1-631-559-9269 1-516-512-3133

 Email: info@creative-biomart.com  Fax: 1-631-938-8127

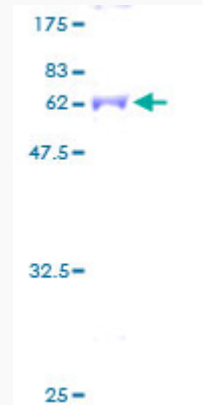
 45-1 Ramsey Road, Shirley, NY 11967, USA

UniProt ID

Q14894

Quality Control

Testing:



12.5% SDS-PAGE Stained with Coomassie Blue.

 Tel: 1-631-559-9269 1-516-512-3133

 Email: info@creative-biomart.com  Fax: 1-631-938-8127

 45-1 Ramsey Road, Shirley, NY 11967, USA