

Recombinant Human CRYM Protein, Myc/DDK-tagged, C13 and N15-labeled

Cat. No. CRYM-2500H **Lot. No.** (See product label)

SPECIFICATION

Product Overview	CRYM MS Standard C13 and N15-labeled recombinant protein (NP_001879) with a C-terminal MYC/DDK tag, was expressed in HEK293 cells.
Species	Human
Source	HEK293
Description	Crystallins are separated into two classes: taxon-specific and ubiquitous. The former class is also called phylogenetically-restricted crystallins. The latter class constitutes the major proteins of vertebrate eye lens and maintains the transparency and refractive index of the lens. This gene encodes a taxon-specific crystallin protein that binds NADPH and has sequence similarity to bacterial ornithine cyclodeaminases. The encoded protein does not perform a structural role in lens tissue, and instead it binds thyroid hormone for possible regulatory or developmental roles. Mutations in this gene have been associated with autosomal dominant non-syndromic deafness.
Molecular Mass	33.8 kDa
AA Sequence	MSRVPAFLSAAEVEEHLRSSSLIPPLETALANFSSGPEGGVMQPVRTVVPVTKHRG YLGVMPAYSAEDALTTKLVTFYEDRGITSVVP SHQATVLLFEPSNGTLLAVMDGNVI TAKRRTAAVSAIATKFLKPPSSEVLCILGAGVQAYSHYEIFTEQFSFKEVRIWNRTKEN AEKFADTVQGEVRCSSVQEAVAGADVITVTLATEPILFGEWVKPGAHINAVGASRP DWRELDDELMKEAVLYVDSQEAALKESGDVLLSGAEIFAELGEVIKGVKPAHCEKTT

 Tel: 1-631-559-9269 1-516-512-3133

 Email: info@creative-biomart.com  Fax: 1-631-938-8127

 45-1 Ramsey Road, Shirley, NY 11967, USA



VFKSLGMAVEDTVAAKLIYDSWSSGKTRTRPLEQKLISEEDLAANDILDYKDDDDKV

Purity > 80% as determined by SDS-PAGE and Coomassie blue staining

Stability Stable for 3 months from receipt of products under proper storage and handling conditions.

Storage Store at -80 centigrade. Avoid repeated freeze-thaw cycles.

Concentration 50 µg/mL as determined by BCA

Storage Buffer 100 mM glycine, 25 mM Tris-HCl, pH 7.3.

GENE INFORMATION

Gene Name CRYM crystallin mu [Homo sapiens (human)]

Official Symbol CRYM

Synonyms CRYM; crystallin, mu; thiomorpholine-carboxylate dehydrogenase; DFNA40; ketimine reductase; mu-crystallin homolog; NADP-regulated thyroid-hormone binding protein; THBP;

Gene ID 1428

mRNA Refseq NM_001888

Protein Refseq NP_001879

MIM 123740

Tel: 1-631-559-9269 1-516-512-3133

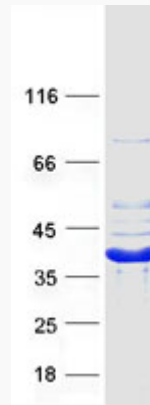
Email: info@creative-biomart.com Fax: 1-631-938-8127

45-1 Ramsey Road, Shirley, NY 11967, USA

UniProt ID

Q14894

SDS-PAGE



 Tel: 1-631-559-9269 1-516-512-3133

 Email: info@creative-biomart.com  Fax: 1-631-938-8127

 45-1 Ramsey Road, Shirley, NY 11967, USA