

Recombinant Human CRYZ Protein, GST-tagged

Cat. No. CRYZ-1947H Lot. No. (See product label)

SPECIFICATION

Product Overview	Human CRYZ full-length ORF (NP_001880.2, 1 a.a. - 329 a.a.) recombinant protein with GST-tag at N-terminal.
Species	Human
Source	Wheat Germ
Description	<p>Crystallins are separated into two classes: taxon-specific, or enzyme, and ubiquitous. The latter class constitutes the major proteins of vertebrate eye lens and maintains the transparency and refractive index of the lens. The former class is also called phylogenetically-restricted crystallins. This gene encodes a taxon-specific crystallin protein which has NADPH-dependent quinone reductase activity distinct from other known quinone reductases. It lacks alcohol dehydrogenase activity although by similarity it is considered a member of the zinc-containing alcohol dehydrogenase family. Unlike other mammalian species, in humans, lens expression is low. Alternatively spliced transcript variants encoding different isoforms have been found for this gene. One pseudogene is known to exist. [provided by RefSeq, Sep 2008]</p>
Molecular Mass	61.6 kDa
AA Sequence	<p>MATGQKLMRAVRVFEFGGPEVLKLRSDIAVPIPKDHQVLIKVHACGVNVPVETYIRSG TYSRKPLLPTYTPGSDVAGVIEAVGDNASAFKKGDRVFTSSTISGGYAEYALAADHTV YKLPEKLDKFGAAIGIPYFTAYRALIHSACVKAGESVLVHGASGGVGLAACQIARAY GLKILGTAGTEEGQKIVLQNGAHEVFNHREVNYIDKIKKYVGEKGIDIIIEMLANVNLSK</p>

 Tel: 1-631-559-9269 1-516-512-3133

 Email: info@creative-biomart.com  Fax: 1-631-938-8127

 45-1 Ramsey Road, Shirley, NY 11967, USA

DLSLLSHGGRVIVVGSRGTIEINPRDTMAKESSIIGVTLFSSTKEEFQQYAAALQAGM
EIGWLKPVIGSQYPLEKVAEAHENIIHGSGATGKMILL

Applications
Enzyme-linked Immunoabsorbent Assay
Western Blot (Recombinant protein)
Antibody Production
Protein Array

Notes
Best use within three months from the date of receipt of this protein.

Storage
Store at -80 centigrade. Aliquot to avoid repeated freezing and thawing.

Storage Buffer
50 mM Tris-HCl, 10 mM reduced Glutathione, pH=8.0 in the elution buffer.

GENE INFORMATION

Gene Name
CRYZ crystallin, zeta (quinone reductase) [Homo sapiens]

Official Symbol
CRYZ

Synonyms
CRYZ; crystallin, zeta (quinone reductase); quinone oxidoreductase; NADPH:quinone reductase; FLJ41475; DKFZp779E0834;

Gene ID
1429

mRNA Refseq
NM_001130042

Protein Refseq
NP_001123514

MIM
123691

 Tel: 1-631-559-9269 1-516-512-3133

 Email: info@creative-biomart.com  Fax: 1-631-938-8127

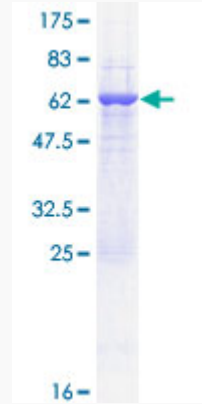
 45-1 Ramsey Road, Shirley, NY 11967, USA

UniProt ID


Q08257

Quality Control

Testing:



12.5% SDS-PAGE Stained with Coomassie Blue.

 Tel: 1-631-559-9269 1-516-512-3133

 Email: info@creative-biomart.com  Fax: 1-631-938-8127

 45-1 Ramsey Road, Shirley, NY 11967, USA