

## Recombinant Human CS Protein (Lys103-Ala394), N-His tagged


Cat. No. CS-1825H Lot. No. (See product label)

### SPECIFICATION

<b>Product Overview</b>	Recombinant human CS (Lys103-Ala394) fused with N-His tag was expressed in E. coli.
<b>Species</b>	Human
<b>Source</b>	E.coli
<b>ProteinLength</b>	Lys103-Ala394
<b>Form</b>	Lyophilized powder/frozen liquid
<b>Molecular Mass</b>	34.92 kDa
<b>Purity</b>	>90% as determined by SDS-PAGE
<b>Notes</b>	For research use only.
<b>Storage</b>	Use a manual defrost freezer and avoid repeated freeze thaw cycles. Store at 2 to 8 centigrade for one week. Store at -20 to -80 centigrade for twelve months from the date of receipt.
<b>Storage Buffer</b>	0.01M PBS, pH 7.4, 0.02% NLS
<b>Reconstitution</b>	Reconstitute in sterile water for a stock solution.

 Tel: 1-631-559-9269 1-516-512-3133

 Email: [info@creative-biomart.com](mailto:info@creative-biomart.com)  Fax: 1-631-938-8127

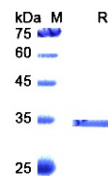
 45-1 Ramsey Road, Shirley, NY 11967, USA


**Shipping**

They are shipped out with dry ice/blue ice unless customers require otherwise.


**GENE INFORMATION**

<b>Gene Name</b>	CS citrate synthase [ Homo sapiens (human) ]
<b>Official Symbol</b>	CS
<b>Synonyms</b>	CS; citrate synthase; citrate synthase, mitochondrial;
<b>Gene ID</b>	1431
<b>mRNA Refseq</b>	NM_004077
<b>Protein Refseq</b>	NP_004068
<b>MIM</b>	118950
<b>UniProt ID</b>	O75390

**SDS-PAGE**


 Tel: 1-631-559-9269 1-516-512-3133

 Email: [info@creative-biomart.com](mailto:info@creative-biomart.com)  Fax: 1-631-938-8127

 45-1 Ramsey Road, Shirley, NY 11967, USA