

Recombinant Human CS Protein, GST-tagged

Cat. No. CS-1950H Lot. No. (See product label)

SPECIFICATION

Product Overview	Human CS full-length ORF (AAH00105.3, 1 a.a. - 264 a.a.) recombinant protein with GST-tag at N-terminal.
Species	Human
Source	Wheat Germ
Description	The protein encoded by this gene is a Krebs tricarboxylic acid cycle enzyme that catalyzes the synthesis of citrate from oxaloacetate and acetyl coenzyme A. The enzyme is found in nearly all cells capable of oxidative metabolism. This protein is nuclear encoded and transported into the mitochondrial matrix, where the mature form is found. [provided by RefSeq, Jul 2008]
Molecular Mass	54.67 kDa
AA Sequence	MDLIAKLPCVAAKIYRNLYREGSGIGAIIDSNLDWSHNFTNMLGYTDHQFTELTRLTYLT IHSDHEGGNVSAHTSHLVGSALSDPYLSFAAAMNGLAGPLHGLANQEVLVWLTQLQ KEVGKDVSDKLRDYIWNTLNLSGRVVPYGHAVLRKTDPRYTCQREFALKHLPNDP MFKLVAQLYKIVPNVLEQKAKNPWPNVDAHSGVLLQYYGMTEMNYYTVLFGVSR ALGVLAQLIWSRALGFPLERP KSMSTEGMLKMFVDSKSG
Applications	Enzyme-linked Immunoabsorbent Assay Western Blot (Recombinant protein) Antibody Production Protein Array

 Tel: 1-631-559-9269 1-516-512-3133

 Email: info@creative-biomart.com  Fax: 1-631-938-8127

 45-1 Ramsey Road, Shirley, NY 11967, USA

Notes	Best use within three months from the date of receipt of this protein.
Storage	Store at -80 centigrade. Aliquot to avoid repeated freezing and thawing.
Storage Buffer	50 mM Tris-HCl, 10 mM reduced Glutathione, pH=8.0 in the elution buffer.

GENE INFORMATION

Gene Name	CS citrate synthase [Homo sapiens]
Official Symbol	CS
Synonyms	CS; citrate synthase; citrate synthase, mitochondrial;
Gene ID	1431
mRNA Refseq	NM_004077
Protein Refseq	NP_004068
MIM	118950
UniProt ID	O75390

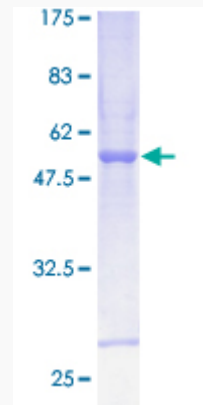
 Tel: 1-631-559-9269 1-516-512-3133

 Email: info@creative-biomart.com  Fax: 1-631-938-8127

 45-1 Ramsey Road, Shirley, NY 11967, USA

Quality Control

Testing:



12.5% SDS-PAGE Stained with Coomassie Blue.

 Tel: 1-631-559-9269 1-516-512-3133

 Email: info@creative-biomart.com  Fax: 1-631-938-8127

 45-1 Ramsey Road, Shirley, NY 11967, USA