

## Recombinant Human CSDE1 Protein, GST-tagged

Cat. No. CSDE1-1958H Lot. No. (See product label)

### SPECIFICATION

**Product Overview** Human CSDE1 full-length ORF ( NP\_009089.4, 1 a.a. - 767 a.a.) recombinant protein with GST-tag at N-terminal.

**Species** Human

**Source** Wheat Germ

**Description** CSDE1 (Cold Shock Domain Containing E1) is a Protein Coding gene. Among its related pathways are Validated targets of C-MYC transcriptional repression. GO annotations related to this gene include nucleic acid binding and poly(A) RNA binding.

**Molecular Mass** 112.1 kDa

**AA Sequence**

```
MSFDPNLLHNNGHNGYPNGTSAALRETGVIEKLLTSYGFIQCSEARLFFHCSQY
NGNLQDLKVGDDVEFEVSSDRRTGKPIAVKLVKIKQEILPEERMNGQEVFYLTYTPE
DVEGNVQLETGDKINFVIDNNKHTGAVSARNIMLLKKKQARCQGVV CAMKEAFGFIE
RGDVVKEIFFHYSEFKGDLETLPQGGDVEFTIKDRNGKEVATDVRLLPQGTVIFEDISI
EHFEGTVTKVIPKVPSKNQNDPLPGRIKVDVIPKELPFGDKDTKSKVTLLEGDHVRF
NISTDRRDKLERATNIEVLSNTFQFTNEAREMGVIAAMRDGFGFIKCVDRDVRMFFH
FSEILDGNQLHIADEVEFTVVPDMLSAQRNHAIKIKLPKGTVSFHSKSDHRFLGTVE
KEATFSNPKTTSPNKGKEKEAEDGIIAYDDCGVKLTIAFQAKDVEGSTSPQIGDKVEF
SISDKQRPQGVATCVRLGRNSNSKRLLGYVATLKDNGFIETANHDKEIFFHYSE
FSGDVDSLELGD MVEYSLSKGGKGNKVS AEKVNKTHSVNGITEEADPTIYSGKVI RPL
RSVDPTQTEYQGMIEIVEEGDMKGEVYPPFGIVGMANKGDCLQKGESVKFQLCVLGG
```

Tel: 1-631-559-9269 1-516-512-3133

Email: [info@creative-biomart.com](mailto:info@creative-biomart.com) Fax: 1-631-938-8127

45-1 Ramsey Road, Shirley, NY 11967, USA

NAQTMAYNITPLRRATVECVKDQFGFINYEVGDSKKLFFHVKEVQDGIELQAGDEVE  
 FSVILNQRTGKCSACNVWRVCEGPKAVAAPRPDRLVNRLKNITLDDASAPRLMVLRL  
 QPRGPDNSMGFGAERKIRQAGVID

<b>Applications</b>	Enzyme-linked Immunoabsorbent Assay Western Blot (Recombinant protein) Antibody Production Protein Array
<b>Notes</b>	Best use within three months from the date of receipt of this protein.
<b>Storage</b>	Store at -80 centigrade. Aliquot to avoid repeated freezing and thawing.
<b>Storage Buffer</b>	50 mM Tris-HCl, 10 mM reduced Glutathione, pH=8.0 in the elution buffer.

## GENE INFORMATION

<b>Gene Name</b>	CSDE1 cold shock domain containing E1, RNA-binding [ Homo sapiens ]
<b>Official Symbol</b>	CSDE1
<b>Synonyms</b>	CSDE1; cold shock domain containing E1, RNA-binding; cold shock domain-containing protein E1; D1S155E; UNR; upstream of NRAS; NRAS-related; N-ras upstream gene protein; FLJ26882; RP5-1000E10.3; DKFZp779B0247; DKFZp779J1455;
<b>Gene ID</b>	7812
<b>mRNA Refseq</b>	NM_001007553
<b>Protein Refseq</b>	NP_001007554

 Tel: 1-631-559-9269 1-516-512-3133

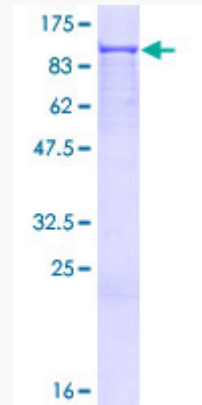
 Email: [info@creative-biomart.com](mailto:info@creative-biomart.com)  Fax: 1-631-938-8127

 45-1 Ramsey Road, Shirley, NY 11967, USA

**MIM** 191510

**UniProt ID** O75534

**Quality Control  
Testing:**



12.5% SDS-PAGE Stained with Coomassie Blue.

 Tel: 1-631-559-9269 1-516-512-3133

 Email: [info@creative-biomart.com](mailto:info@creative-biomart.com)  Fax: 1-631-938-8127

 45-1 Ramsey Road, Shirley, NY 11967, USA