

Active Recombinant Human CSF1 Protein, Pre-aliquoted

Cat. No. CSF1-12H Lot. No. (See product label)

SPECIFICATION

Product Overview	Recombinant Human CSF1 Protein, Glu33 - Ser190, with an N-terminal Met, was expressed in E. coli.
Species	Human
Source	E.coli
ProteinLength	Glu33-Ser190, with an N-terminal Met
Description	The protein encoded by this gene is a cytokine that controls the production, differentiation, and function of macrophages. The active form of the protein is found extracellularly as a disulfide-linked homodimer, and is thought to be produced by proteolytic cleavage of membrane-bound precursors. The encoded protein may be involved in development of the placenta. Alternate splicing results in multiple transcript variants.
Bio-activity	Measured in a cell proliferation assay using M-NFS-60 mouse myelogenous leukemia lymphoblast cells. The ED50 for this effect is 0.5-1.5 ng/mL.
Molecular Mass	Predicted Molecular Mass:18.5 kDa (monomer)
N-terminal Sequence Analysis	Met
Endotoxin	< 0.10 EU/μg of the protein by the LAL method.

 Tel: 1-631-559-9269 1-516-512-3133

 Email: info@creative-biomart.com  Fax: 1-631-938-8127

 45-1 Ramsey Road, Shirley, NY 11967, USA

Purity	> 97% by SDS-PAGE under reducing conditions and visualized by silver stain.
Stability	<p>Use a manual defrost freezer and avoid repeated freeze-thaw cycles.</p> <ul style="list-style-type: none"> • 6 months from date of receipt at room temperature. • 12 months from date of receipt at 2-8 centigrade as supplied. • 1 month at 2-8 centigrade under sterile conditions after reconstitution. • 3 months at -20 to -80 centigrade under sterile conditions after reconstitution.
Reconstitution	For a stock solution, reconstitute at 50-500 µg/mL in sterile PBS, or simply roll Pre-aliquoted directly into cell culture medium.
Shipping	The product is shipped at ambient temperature.

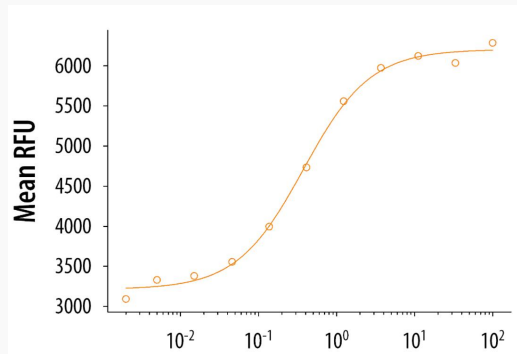
GENE INFORMATION

Gene Name	CSF1 colony stimulating factor 1 [Homo sapiens (human)]
Official Symbol	CSF1
Synonyms	CSF1; colony stimulating factor 1; MCSF; CSF-1; macrophage colony-stimulating factor 1; colony stimulating factor 1 (macrophage); lanimostim; macrophage colony stimulating factor 1; EC 2.7.10.1
Gene ID	1435
mRNA Refseq	NM_172211
Protein Refseq	NP_757350
MIM	120420

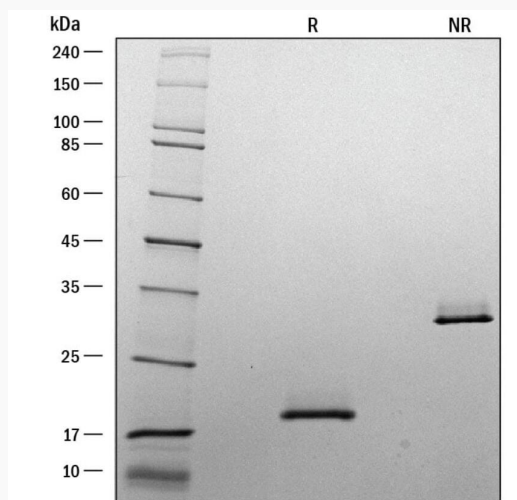
 Tel: 1-631-559-9269 1-516-512-3133

 Email: info@creative-biomart.com  Fax: 1-631-938-8127

 45-1 Ramsey Road, Shirley, NY 11967, USA

UniProt ID
P07333
Bio-activity


Recombinant Human M-CSF stimulates cell proliferation of the M-NFS-60 mouse myelogenous leukemia lymphoblast cell line in a dose-dependent manner. The ED50 for this effect is 0.5-1.5 ng/mL.

SDS-PAGE


1 µg/lane of Recombinant Human M-CSF was resolved with SDS-PAGE under reducing (R) and non-reducing (NR) conditions and visualized with silver staining, showing bands at 19 kDa and 35 kDa, respectively.

Tel: 1-631-559-9269 1-516-512-3133

Email: info@creative-biomart.com Fax: 1-631-938-8127

45-1 Ramsey Road, Shirley, NY 11967, USA