

Recombinant Human CSF1 Protein, GST-tagged

Cat. No. CSF1-1962H **Lot. No.** (See product label)

SPECIFICATION

Product Overview	Human CSF1 full-length ORF (NP_000748.3, 1 a.a. - 554 a.a.) recombinant protein with GST-tag at N-terminal.
Species	Human
Source	Wheat Germ
Description	The protein encoded by this gene is a cytokine that controls the production, differentiation, and function of macrophages. The active form of the protein is found extracellularly as a disulfide-linked homodimer, and is thought to be produced by proteolytic cleavage of membrane-bound precursors. The encoded protein may be involved in development of the placenta. Alternate splicing results in multiple transcript variants. [provided by RefSeq, Sep 2011]
Molecular Mass	86.5 kDa
AA Sequence	<p>MTAPGAAGRCPPTTWLGSLLLLVCLLASRSITEEVSEYCSHMIGSGHLQSLQRLIDS QMETSCQITFEFVDQEQLKDPVCYLKKAFLLVQDIMEDTMRFRDNTPNIAIAIVQLQEL SLRLKSCFTKDYEEHDKACVRTFYETPLQLLEKVKNVFNETKNLLDKDWNIFSKNCN NSFAECSSQDVVTKPDCNCLYPKAIPSSDPASVSPHQPLAPSMAPVAGLTWEDSEG TEGSLLPGEQPLHTVDPGSAKQRPPRSTCQSFPEPPTPVVKDSTIGGSPQPRPSV GAFNPGMEDILDSAMGTNWVPEEASGEASEIPVPQGTELSRPGGGSMQTEPAR PSNFLSASSPLPASAKGQQPADVTGTALPRVGPVRPTGQDWNHTPQKTDHPSALL RDPPEPGSPRISLRPQGLSNPSTLSAQPLSRSHSSGSVLPLGELEGRRSTRDRR</p>

 Tel: 1-631-559-9269 1-516-512-3133

 Email: info@creative-biomart.com  Fax: 1-631-938-8127

 45-1 Ramsey Road, Shirley, NY 11967, USA

SPAEEGGPASEGAARPLPRFNSVPLTDTGHERQSEGSSSPQLQESVFHLLVPSVIL
VLLAVGGLLFYRWRRRSHQEPQRADSPLEQPEGSPLTQDDRQVELPV

Applications	<p>Enzyme-linked Immunoabsorbent Assay</p> <p>Western Blot (Recombinant protein)</p> <p>Antibody Production</p> <p>Protein Array</p>
Notes	Best use within three months from the date of receipt of this protein.
Storage	Store at -80 centigrade. Aliquot to avoid repeated freezing and thawing.
Storage Buffer	50 mM Tris-HCl, 10 mM reduced Glutathione, pH=8.0 in the elution buffer.

GENE INFORMATION

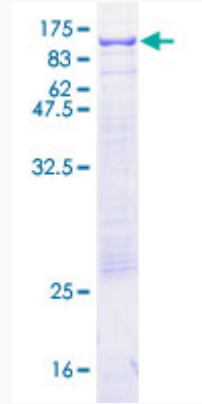
Gene Name	CSF1 colony stimulating factor 1 (macrophage) [Homo sapiens]
Official Symbol	CSF1
Synonyms	CSF1; colony stimulating factor 1 (macrophage); macrophage colony-stimulating factor 1; M CSF; MCSF; MGC31930; lanimostim; CSF-1;
Gene ID	1435
mRNA Refseq	NM_000757
Protein Refseq	NP_000748
MIM	120420

UniProt ID

P09603

Quality Control

Testing:



12.5% SDS-PAGE Stained with Coomassie Blue.

 Tel: 1-631-559-9269 1-516-512-3133

 Email: info@creative-biomart.com  Fax: 1-631-938-8127

 45-1 Ramsey Road, Shirley, NY 11967, USA