

Recombinant Human colony stimulating factor 1 Protein, Tag Free

Cat. No. CSF1-254H Lot. No. (See product label)

SPECIFICATION

| | |
|-------------------------|--------------------------------------------------------------------------------------------------------------------------------------------------------------------------------------------------------------------------------------------------------------------------------------------------------------------------------------------------------------------------------------------------------------------------------------------------------------------------------------------------------------------|
| Product Overview | Recombinant human M-CSF/CSF1 protein (P09603-3) (Glu 33-Ser 190) without tag was expressed in HEK293. |
| Species | Human |
| Source | HEK293 |
| ProteinLength | 33-190aa |
| Description | The colony stimulating factor 1 (CSF1), also known as macrophage colony-stimulating factor (M-CSF), is a secreted cytokine which causes hematopoietic stem cells to differentiate into macrophages or other related cell types. Eukaryotic cells also produce M-CSF in order to combat intercellular viral infection. It is one of the three experimentally described colony-stimulating factors. M-CSF binds to the colony stimulating factor 1 receptor. It may also be involved in development of the placenta. |
| Tag | Non |
| Molecular Mass | 18.8 kDa |
| Endotoxin | Less than 1.0 EU/μg by the LAL method. |
| Purity | >95% as determined by SDS-PAGE. |

 Tel: 1-631-559-9269 1-516-512-3133

 Email: info@creative-biomart.com  Fax: 1-631-938-8127

 45-1 Ramsey Road, Shirley, NY 11967, USA

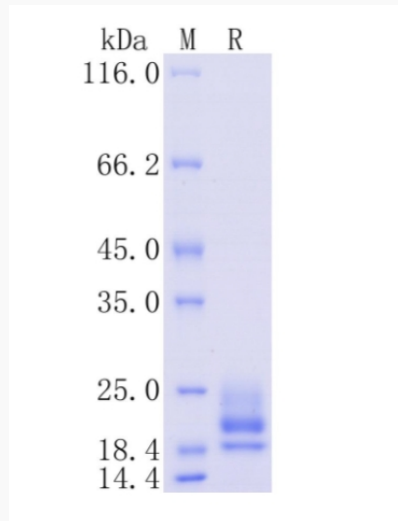
| | |
|-------------------------|-------------------------------------------------------------------------------------------------------------------------------------------------------------------------------------------------------------------------------|
| Storage | Please avoid repeated freeze-thaw cycles. Samples are stable for up to twelve months from date of receipt at -20 to -80 centigrade. It is recommended that aliquot the reconstituted solution to minimize freeze-thaw cycles. |
| Storage Buffer | Lyophilized from a 0.2 µm filtered solution of PBS, pH7.4, 5% Trehalose, 5% mannitol. |
| Reconstitution | Reconstitute at 250 µg/mL in sterile water. |
| GENE INFORMATION | |
| Gene Name | CSF1 colony stimulating factor 1 [Homo sapiens (human)] |
| Official Symbol | CSF1 |
| Synonyms | CSF1; colony stimulating factor 1 (macrophage); macrophage colony-stimulating factor 1; M CSF; MCSF; MGC31930; lanimostim; CSF-1; |
| Gene ID | 1435 |
| mRNA Refseq | NM_000757 |
| Protein Refseq | NP_000748 |
| MIM | 120420 |
| UniProt ID | P09603 |

 Tel: 1-631-559-9269 1-516-512-3133

 Email: info@creative-biomart.com  Fax: 1-631-938-8127

 45-1 Ramsey Road, Shirley, NY 11967, USA

**Protein on SDS-
PAGE under
reducing (R)
condition.**



 Tel: 1-631-559-9269 1-516-512-3133

 Email: info@creative-biomart.com  Fax: 1-631-938-8127

 45-1 Ramsey Road, Shirley, NY 11967, USA