

Active Recombinant Human CSF1 Protein (Glu33-Ser190), C-His tagged, Animal-free, Carrier-free

Cat. No. CSF1-27H Lot. No. (See product label)

SPECIFICATION

Product Overview	Recombinant Human CSF1 Protein (Glu33-Ser190) with C-His tag was expressed in E. coli and Animal-free as well as Carrier-free.
Species	Human
Source	E.coli
ProteinLength	Glu33-Ser190
Description	Macrophage Colony Stimulating Factor (M-CSF) is a 18.54 kDa member of hematopoietic Growth Factors with 159 amino acid residues. M-CSF produced by osteoblasts and osteoblast precursors. M-CSF stimulates the growth and differentiation of the monocyte lineage, and promotes the survival, proliferation, and functions of mature monocytes/macrophages.
Form	Lyophilized
Bio-activity	Measure by its ability to induce proliferation in NFS-60 cells. The ED50 for this effect is < 1 ng/mL. The specific activity of recombinant human M-CSF is approximately >2.5 × 10 ⁸ IU/mg.
Molecular Mass	The protein has a calculated MW of 13.34 kDa. The protein migrates as 13-26 kDa under reducing condition (SDS-PAGE analysis).

 Tel: 1-631-559-9269 1-516-512-3133

 Email: info@creative-biomart.com  Fax: 1-631-938-8127

 45-1 Ramsey Road, Shirley, NY 11967, USA

Endotoxin	< 0.1 EU/μg of the protein by the LAL method.
Purity	>98% as determined by SDS-PAGE analysis.
Storage	This product is stable after storage at: -20 centigrade for 12 months in lyophilized state from date of receipt. -20 or -80 centigrade for 1 month under sterile conditions after reconstitution. Avoid repeated freeze/thaw cycles.
Storage Buffer	Lyophilized from a 0.2 μm filtered solution of PBS, pH 7.4.
Reconstitution	It is recommended to reconstitute the lyophilized protein in sterile H ₂ O to a concentration not less than 200 μg/mL and incubate the stock solution for at least 20 min to ensure sufficient re-dissolved.
Shipping	The product is shipped with polar packs. Upon receipt, store it immediately at -20 centigrade or lower for long term storage.

GENE INFORMATION

Gene Name	CSF1 colony stimulating factor 1 (macrophage) [Homo sapiens (human)]
Official Symbol	CSF1
Synonyms	CSF1; colony stimulating factor 1 (macrophage); macrophage colony-stimulating factor 1; M CSF; MCSF; MGC31930; lanimostim; CSF-1;
Gene ID	1435
mRNA Refseq	NM_000757

 Tel: 1-631-559-9269 1-516-512-3133

 Email: info@creative-biomart.com  Fax: 1-631-938-8127

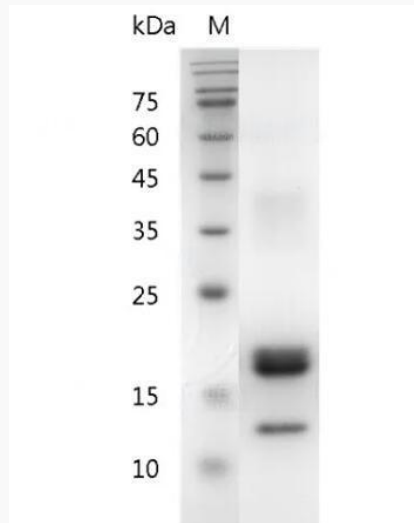
 45-1 Ramsey Road, Shirley, NY 11967, USA

Protein Refseq NP_000748

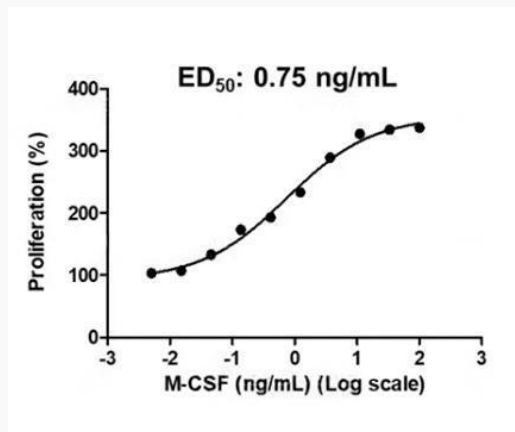
MIM 120420

UniProt ID P09603

**SDS-PAGE analysis
of recombinant
human M-CSF.**



Activity



 Tel: 1-631-559-9269 1-516-512-3133

 Email: info@creative-biomart.com  Fax: 1-631-938-8127

 45-1 Ramsey Road, Shirley, NY 11967, USA



Human M-CSF, His Tag, E. coli (LDG093PHE) induced NFS-60 cell proliferation,
with the ED50 at 0.75 ng/mL.

 Tel: 1-631-559-9269 1-516-512-3133

 Email: info@creative-biomart.com  Fax: 1-631-938-8127

 45-1 Ramsey Road, Shirley, NY 11967, USA