

Recombinant Human CSF1 Protein, Myc/DDK-tagged, C13 and N15-labeled

Cat. No. CSF1-4448H **Lot. No.** (See product label)

SPECIFICATION

Product Overview

CSF1 MS Standard C13 and N15-labeled recombinant protein (NP_000748) with a C-terminal MYC/DDK tag, was expressed in HEK293 cells.

Species

Human

Source

HEK293

Description

The protein encoded by this gene is a cytokine that controls the production, differentiation, and function of macrophages. The active form of the protein is found extracellularly as a disulfide-linked homodimer, and is thought to be produced by proteolytic cleavage of membrane-bound precursors. The encoded protein may be involved in development of the placenta. Alternate splicing results in multiple transcript variants.

Molecular Mass

60.1 kDa

AA Sequence

MTAPGAAGRCPPTTWLGSLLLLVCLLASRSITEEVSEYCSHMIGSGHLQSLQRLIDS
 QMETSCQITFEFVDQEQLKDPVCYLKKAFLLVQDIMEDTMRFRDNTPNIAIIVQLQEL
 SLRLKSCFTKDYEEHDKACVRTFYETPLQLLEKVKNVFNETKNLLDKDWNIFSKNCN
 NSFAECSSQDVVTKPDCNCLYPKAIPSSDPASVSPHQPLAPSMAPVAGLTWEDSEG
 TEGSLLPGEQPLHTVDPGSAKQRPPRSTCQSFEPPETPVVKDSTIGGSPQPRPSV
 GAFNPGMEDILDSAMGTNWVPEEASGEASEIPVPQGTLSRSPRGGGSMQTEPAR
 PSNFLSASSPLPASAKGQQPADVTGTALPRVGPVRPTGQDWNHTPQKTDHPSALL

 Tel: 1-631-559-9269 1-516-512-3133

 Email: info@creative-biomart.com  Fax: 1-631-938-8127

 45-1 Ramsey Road, Shirley, NY 11967, USA

RDPPEPGSPRISSLRPQGLSNPSTLSAQPQLSRSHSSGSVLPLGELEGRRSTRDRR
 SPAEPEGGPASEGAARPLPRFNSVPLTDTGHERQSEGSSSPQLQESVFHLLVPSVIL
 VLLAVGGLLFYRWRRRSHQEPQRADSPLEQPEGSPLTQDDRQVELPVTRTRPLEQ
 KLISEEDLAANDILDYKDDDDKV

Purity > 80% as determined by SDS-PAGE and Coomassie blue staining

Stability Stable for 3 months from receipt of products under proper storage and handling conditions.

Storage Store at -80 centigrade. Avoid repeated freeze-thaw cycles.

Concentration 50 µg/mL as determined by BCA

Storage Buffer 100 mM glycine, 25 mM Tris-HCl, pH 7.3.

GENE INFORMATION

Gene Name CSF1 colony stimulating factor 1 [Homo sapiens (human)]

Official Symbol CSF1

Synonyms CSF1; colony stimulating factor 1 (macrophage); macrophage colony-stimulating factor 1; M CSF; MCSF; MGC31930; lanimostim; CSF-1;

Gene ID 1435

mRNA Refseq NM_000757

Protein Refseq NP_000748

 Tel: 1-631-559-9269 1-516-512-3133

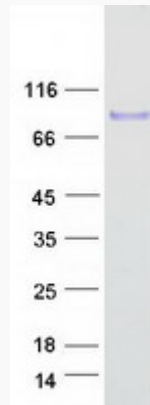
 Email: info@creative-biomart.com  Fax: 1-631-938-8127

 45-1 Ramsey Road, Shirley, NY 11967, USA

MIM 120420

UniProt ID P09603

SDS-PAGE



 Tel: 1-631-559-9269 1-516-512-3133

 Email: info@creative-biomart.com  Fax: 1-631-938-8127

 45-1 Ramsey Road, Shirley, NY 11967, USA