

Recombinant Human CSF1R Protein, hlgG-His-tagged

Cat. No. CSF1R-001H Lot. No. (See product label)

SPECIFICATION

Product Overview	Recombinant human CSF1R, fused to hlgG-His-tag at C-terminus, was expressed in insect cell and purified by using conventional chromatography techniques.
Species	Human
Source	Insect Cells
Description	<p>CSF1R, also known as macrophage colony-stimulating factor 1 receptor, is a member of the type 3 subfamily of receptor tyrosine kinases. It is expressed primarily on cells of the monocyte and macrophage lineage, stem cells, and in the developing placenta and mediates most of the biological effects of this cytokine. This protein is consisted by an extracellular ligand-binding domain, a single membrane-spanning segment, and an intracellular tyrosine kinase domain. CSF1 and this receptor were initially implicated as essential for normal monocyte development as well as for trophoblastic implantation. This apparent role of CSF1/CSF1R in normal mammary gland development is very intriguing because this relationship has also been found in the biology of breast cancer in which abnormal expression of CSF1 and its receptor. Also, increased levels of CSF1R are found in microglia in Alzheimer's disease and after brain injuries. The increased receptor expression causes microglia to become more active.</p>
Form	Liquid
Molecular Mass	82.1 kDa

 Tel: 1-631-559-9269 1-516-512-3133

 Email: info@creative-biomart.com  Fax: 1-631-938-8127

 45-1 Ramsey Road, Shirley, NY 11967, USA

N-terminal Sequence Analysis	Ile 20
Endotoxin	< 1.0 EU per 1 µg of protein (determined by LAL method)
Purity	> 90% by SDS - PAGE
Storage	Can be stored at +4 centigrade short term (1-2 weeks). For long term storage, aliquot and store at -20 centigrade or -70 centigrade. Avoid repeated freezing and thawing cycles.
Concentration	0.25 mg/mL (determined by Absorbance at 280nm)
Storage Buffer	In Phosphate Buffered Saline (pH 7.4) containing 10% glycerol.
Warning	For research use only. This product is not intended or approved for human, diagnostics or veterin
AA Sequence	<p>IPVIEPSVPELVVKPGATVTLRCVGNNGSVEWDGPPSPHWTLYSDGSSSILSTNNATF QNTGTYRCTEPGDPLGGSAAIHLYVKDPPARPWNVLAQEVVVFEDQDALLPCLLTDP VLEAGVSLVRVRGRPLMRHTNYSFSPWHGFTIHRAKFIQSQDYQCSALMGGKVM SISIRLKVQKVIPGPPALTLVPAELVRIRGEAAQIVCSASSVDVNFDFLQHNNTKLAIP QQSDFHNNRYQKVLTLNLDQVDFQHAGNYSVASNVQGGKSTSMFFRVVESAYLN LSSEQNLIQEVTVGEGNLKVMVEAYPGLQGFWTYLGPFSHQPEPKLANATTKD TYRHTFTLSLPRPKPSEAGRYSFLARNPGGWRAITFELTLRYPPEVSVIWFINGSG TLLCAASGYQPQNVTLWQCSGHTDRCDEAQLQVWDDPYPEVLSQEPFHKVTVQS LLTVETLEHNQTYECRAHNSVGSWSAFIPISAGAHTHPPDEFLLTLPKSCDKTH TCPPCPAPELLGGPSVFLFPPKPKDTLMISRTPEVTCVVVDVSHEDPEVKFNWYVD GVEVHNAKTKPREEQYNSTYRVVSVLTVLHQDWLNGKEYKCKVSNKALPAPIEKTIS KAKGQPREPQVYTLPPSRDELTKNQVSLTCLVKGFYPSDIAVEWESNGQPENNYKT TPPVLDSDGSFFLYSKLTVDKSRWQQGNVFCSSVMHEALHNHYTQKSLSLSPGKH</p>

Tel: 1-631-559-9269 1-516-512-3133

Email: info@creative-biomart.com Fax: 1-631-938-8127

45-1 Ramsey Road, Shirley, NY 11967, USA

HHHHH

GENE INFORMATION

Gene Name CSF1R colony stimulating factor 1 receptor [Homo sapiens (human)]

Official Symbol CSF1R

Synonyms CSF1R; colony stimulating factor 1 receptor; FMS; CSFR; FIM2; HDLS; C-FMS; CD115; CSF-1R; M-CSF-R; macrophage colony-stimulating factor 1 receptor; CD115 antigen; CSF-1 receptor; FMS proto-oncogene; McDonough feline sarcoma viral (v-fms) oncogene homolog; macrophage colony stimulating factor I receptor; proto-oncogene c-Fms; EC 2.7.10.1

Gene ID 1436

mRNA Refseq NM_005211

Protein Refseq NP_005202

MIM 164770

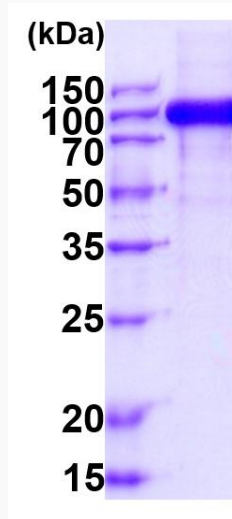
UniProt ID P07333

 Tel: 1-631-559-9269 1-516-512-3133

 Email: info@creative-biomart.com  Fax: 1-631-938-8127

 45-1 Ramsey Road, Shirley, NY 11967, USA


SDS-PAGE



15% SDS-PAGE (3 µg)

 Tel: 1-631-559-9269 1-516-512-3133

 Email: info@creative-biomart.com  Fax: 1-631-938-8127

 45-1 Ramsey Road, Shirley, NY 11967, USA