

Recombinant Human CSF1R Protein, C-His-tagged

Cat. No. CSF1R-020H Lot. No. (See product label)

SPECIFICATION

Product Overview	Recombinant Human CSF1R Protein with C-His tag was expressed in E. coli.
Species	Human
Source	E.coli
Description	<p>Macrophage-colony stimulating factor (M-CSF, CSF-1) receptor is an integral membrane tyrosine kinase encoded by the c-fms proto-oncogene. M-CSF receptor is expressed in monocytes (macrophages and their progenitors) and drives growth and development of this blood cell lineage. Binding of M-CSF to its receptor induces receptor dimerization, activation, and autophosphorylation of cytoplasmic tyrosine residues used as docking sites for SH2-containing signaling proteins. There are at least five major tyrosine autophosphorylation sites. Tyr723 (Tyr721 in mouse) is located in the kinase insert (KI) region. Phosphorylated Tyr723 binds the p85 subunit of PI3 kinase as well as PLCy2. Phosphorylation of Tyr809 provides a docking site for Shc (5). Overactivation of this receptor can lead to a malignant phenotype in various cell systems. The activated M-CSF receptor has been shown to be a predictor of poor outcome in advanced epithelial ovarian carcinoma and breast cancer.</p>
Molecular Mass	~55 kDa
AA Sequence	<p>IPVIEPSVPELVVKPGATVTLRCVGNNGSVEWDGPPSPHWTLYSDGSSSILSTNNATF QNTGTYRCTEPGDPLGGSAAIHLYVKDPPARPWNVLAQEVVVFEDQDALLPCLLTDP VLEAGVSLVRVRGRPLMRHTNYSFSPWHGFTIHRAKFIQSQDYQCSALMGGRKVM</p>

 Tel: 1-631-559-9269 1-516-512-3133

 Email: info@creative-biomart.com  Fax: 1-631-938-8127

 45-1 Ramsey Road, Shirley, NY 11967, USA

SISIRLKVQKVIPGPPALTLVPAELVRIRGEAAQIVCSASSVDVNFDFLQHNNTKLAIP
 QQSDFHNNRYQKVLTLNLDQVDFQHAGNYSCVASNVQGGKHSTSMFFRVVESAYLN
 LSSEQNLIQEVTVGEGLNLKVMVEAYPGLQGFWNTYLGPFSDHQPEPKLANATTKD
 TYRHTFTLSLPRPKPSEAGRYSFLARNPGGWRALTFELTLRYPPEVSVIWFINGSG
 TLLCAASGYQPQNVTLQCSGHTDRCDEAQLQVWDDPYPEVLSQEPFHKVTVQS
 LLTVETLEHNQTYECRAHNSVSGSGSWAFIPISAGAHTHPPDEFLLFTP

Purity

Transferred into competent cells and the supernatant was purified by NI column affinity chromatography and the purity is > 85% (by SDS-PAGE).

Notes

For research use only, not for use in diagnostic procedure.

Storage

Store at 4 centigrade short term. Aliquot and store at -20 centigrade long term. Avoid freeze-thaw cycles.

Concentration

≥0.5 mg/mL

Storage Buffer

PBS, 4M Urea, pH7.4

GENE INFORMATION

Gene Name

CSF1R colony stimulating factor 1 receptor [Homo sapiens (human)]

Official Symbol

CSF1R

Synonyms

CSF1R; colony stimulating factor 1 receptor; FMS, McDonough feline sarcoma viral (v fms) oncogene homolog; macrophage colony-stimulating factor 1 receptor; C FMS; CD115; CSFR; CSF-1-R; CD115 antigen; CSF-1 receptor; FMS proto-oncogene; proto-oncogene c-Fms; macrophage colony stimulating factor I receptor; McDonough feline sarcoma viral (v-fms) oncogene homolog; FMS; FIM2; HDLS; C-FMS; CSF-1R; M-CSF-R;

 Tel: 1-631-559-9269 1-516-512-3133

 Email: info@creative-biomart.com  Fax: 1-631-938-8127

 45-1 Ramsey Road, Shirley, NY 11967, USA

Gene ID 1436

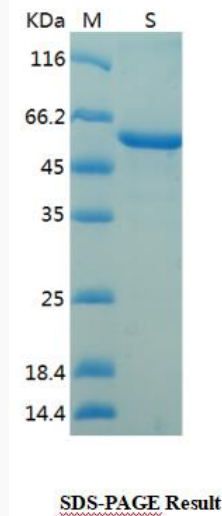
mRNA Refseq NM_005211

Protein Refseq NP_005202

MIM 164770

UniProt ID P07333

SDS-PAGE



Tel: 1-631-559-9269 1-516-512-3133

Email: info@creative-biomart.com Fax: 1-631-938-8127

45-1 Ramsey Road, Shirley, NY 11967, USA