

Recombinant Human CSF1R protein, His-Avi-tagged

Cat. No. CSF1R-333H Lot. No. (See product label)

SPECIFICATION

Product Overview	Recombinant Human CSF1R protein(P07333-1)(Ile20-Glu512), fused with C-terminal His and Avi tag, was expressed in HEK293.
Species	Human
Source	HEK293
ProteinLength	Ile20-Glu512
Tag	C-His-Avi
Form	Lyophilized from 0.22µm filtered solution in PBS (pH 7.4). Normally 5% trehalose is added as protectant before lyophilization.
Bio-activity	Immobilized Human M-CSF R, His Tag at 1µg/ml (100µl/Well). Dose response curve for Anti-M-CSF R Antibody, hFc Tag with the EC50 of 9.2ng/ml determined by ELISA.
Molecular Mass	The protein has a predicted MW of 57.4 kDa. Due to glycosylation, the protein migrates to 75-105 kDa based on Tris-Bis PAGE result.
Endotoxin	Less than 1EU per µg by the LAL method.
Purity	> 95% as determined by Tris-Bis PAGE; > 95% as determined by HPLC
Storage	Reconstituted protein stable at -80°C for 12 months, 4°C for 1 week. Use a manual

 Tel: 1-631-559-9269 1-516-512-3133

 Email: info@creative-biomart.com  Fax: 1-631-938-8127

 45-1 Ramsey Road, Shirley, NY 11967, USA

defrost freezer and avoid repeated freeze-thaw cycles.

Reconstitution

Centrifuge tubes before opening. Reconstituting to a concentration more than 100 µg/ml is recommended. Dissolve the lyophilized protein in distilled water.

GENE INFORMATION

Gene Name [CSF1R colony stimulating factor 1 receptor \[Homo sapiens \]](#)

Official Symbol [CSF1R](#)

Synonyms

CSF1R; colony stimulating factor 1 receptor; FMS, McDonough feline sarcoma viral (v fms) oncogene homolog; macrophage colony-stimulating factor 1 receptor; C FMS; CD115; CSFR; CSF-1-R; CD115 antigen; CSF-1 receptor; FMS proto-oncogene; proto-oncogene c-Fms; macrophage colony stimulating factor I receptor; McDonough feline sarcoma viral (v-fms) oncogene homolog; FMS; FIM2; HDLS; C-FMS; CSF-1R; M-CSF-R;

Gene ID [1436](#)

mRNA Refseq [NM_005211](#)

Protein Refseq [NP_005202](#)

MIM [164770](#)

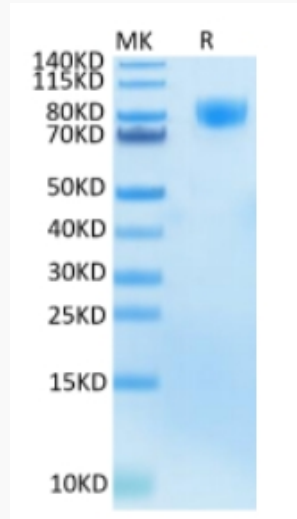
UniProt ID [P07333](#)

 Tel: 1-631-559-9269 1-516-512-3133

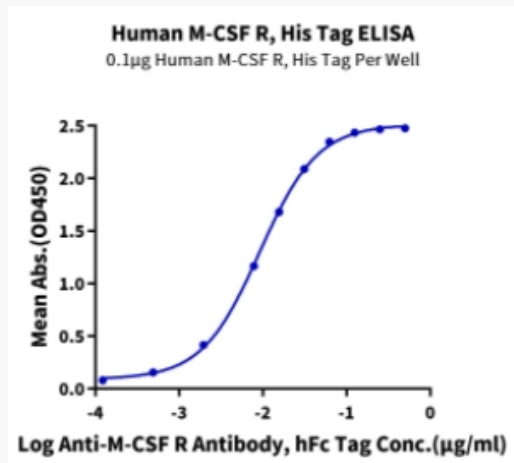
 Email: info@creative-biomart.com  Fax: 1-631-938-8127

 45-1 Ramsey Road, Shirley, NY 11967, USA

Tris-Bis PAGE



ELISA Data



 Tel: 1-631-559-9269 1-516-512-3133

 Email: info@creative-biomart.com  Fax: 1-631-938-8127

 45-1 Ramsey Road, Shirley, NY 11967, USA