

## Active Recombinant Human CSF1R protein

Cat. No. CSF1R-804H Lot. No. (See product label)

### SPECIFICATION

<b>Product Overview</b>	Active Recombinant Human CSF1R protein(P07333-1)(Ile20-Glu512) is expressed from HEK293 without tag.
<b>Species</b>	Human
<b>Source</b>	HEK293
<b>ProteinLength</b>	20-512 aa
<b>Form</b>	Lyophilized from 0.22 µm filtered solution in PBS (pH 7.4).
<b>Bio-activity</b>	Immobilized Human M-CSF R, No Tag at 0.5µg/ml (100µl/well) on the plate. Dose response curve for Anti-M-CSF R Antibody, hFc Tag with the EC50 of 8.0ng/ml determined by ELISA.
<b>Molecular Mass</b>	The protein has a predicted MW of 54.49 kDa. Due to glycosylation, the protein migrates to 70-100 kDa based on Bis-Tris PAGE result.
<b>Endotoxin</b>	Less than 1 EU per µg by the LAL method.
<b>Purity</b>	> 95% as determined by Bis-Tris PAGE > 95% as determined by HPLC
<b>Storage</b>	-20 to -80°C for 12 months as supplied from date of receipt. -80°C for 3 months after reconstitution. Recommend to aliquot the protein into smaller quantities for optimal storage. Please minimize freeze-thaw cycles.

 Tel: 1-631-559-9269 1-516-512-3133

 Email: [info@creative-biomart.com](mailto:info@creative-biomart.com)  Fax: 1-631-938-8127

 45-1 Ramsey Road, Shirley, NY 11967, USA

**Reconstitution**      Dissolve the lyophilized protein in distilled water.

## GENE INFORMATION

**Gene Name**      [CSF1R colony stimulating factor 1 receptor \[ Homo sapiens \]](#)

**Official Symbol**      [CSF1R](#)

**Synonyms**      CSF1R; colony stimulating factor 1 receptor; FMS, McDonough feline sarcoma viral (v fms) oncogene homolog; macrophage colony-stimulating factor 1 receptor; C FMS; CD115; CSFR; CSF-1-R; CD115 antigen; CSF-1 receptor; FMS proto-oncogene; proto-oncogene c-Fms; macrophage colony stimulating factor I receptor; McDonough feline sarcoma viral (v-fms) oncogene homolog; FMS; FIM2; HDLS; C-FMS; CSF-1R; M-CSF-R;

**Gene ID**      [1436](#)

**mRNA Refseq**      [NM\\_005211](#)

**Protein Refseq**      [NP\\_005202](#)

**MIM**      [164770](#)

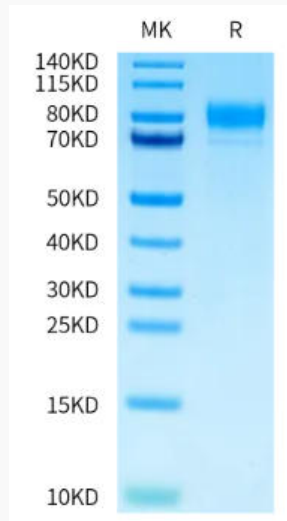
**UniProt ID**      [P07333](#)

 Tel: 1-631-559-9269    1-516-512-3133

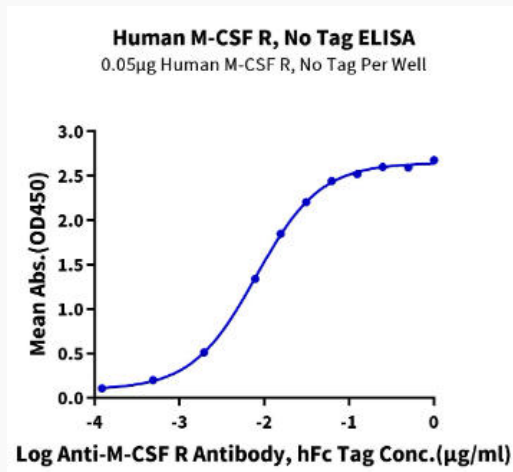
 Email: [info@creative-biomart.com](mailto:info@creative-biomart.com)     Fax: 1-631-938-8127

 45-1 Ramsey Road, Shirley, NY 11967, USA

**Bis-Tris PAGE**



**ELISA Data**



 Tel: 1-631-559-9269 1-516-512-3133

 Email: [info@creative-biomart.com](mailto:info@creative-biomart.com)  Fax: 1-631-938-8127

 45-1 Ramsey Road, Shirley, NY 11967, USA