

Active Recombinant Human CSF2 protein

Cat. No. CSF2-03H Lot. No. (See product label)

SPECIFICATION

Product Overview	Active Recombinant Human CSF2 protein(P04141)(18-144 aa) was expressed in E. coli.
Species	Human
Source	E. coli
ProteinLength	18-144 aa
Form	Lyophilized from a 0.2 µm filtered concentrated solution in PBS, pH 7.4.
Bio-activity	Fully biologically active when compared to standard. The ED50 as determined by a cell proliferation assay using human TF-1 cells is less than 0.1 ng/ml, corresponding to a specific activity of > 1.0 × 10 ⁷ IU/mg.
Molecular Mass	Approximately 14.5 kDa, a single non-glycosylated polypeptide chain containing 127 amino acids.
AASequence	APARSPSPST QPWEHVNAIQ EARRLLNLSR DTAAEMNETV EVISEMFDLQ EPTCLQTRLE LYKQGLRGSL TKLKGPLTMM ASHYKQHCPP TPETSCATQI ITFESFKENL KDFLLVIPFD CWEPVQE
Endotoxin	Less than 1.0 EU/µg of rHuGM-CSF as determined by LAL method.
Purity	> 98 % by SDS-PAGE and HPLC analyses.

 Tel: 1-631-559-9269 1-516-512-3133

 Email: info@creative-biomart.com  Fax: 1-631-938-8127

 45-1 Ramsey Road, Shirley, NY 11967, USA

Storage

Use a manual defrost freezer and avoid repeated freeze-thaw cycles. - 12 months from date of receipt, -20 to -70 °C as supplied. - 1 month, 2 to 8 °C under sterile conditions after reconstitution. - 3 months, -20 to -70 °C under sterile conditions after reconstitution.

Reconstitution

We recommend that this vial be briefly centrifuged prior to opening to bring the contents to the bottom. Reconstitute in sterile distilled water or aqueous buffer containing 0.1 % BSA to a concentration of 0.1-1.0 mg/mL. Stock solutions should be apportioned into working aliquots and stored at ≤ -20 °C. Further dilutions should be made in appropriate buffered solutions.

GENE INFORMATION

Gene Name

CSF2 colony stimulating factor 2 (granulocyte-macrophage) [Homo sapiens]

Official Symbol

CSF2

Synonyms

CSF2; colony stimulating factor 2 (granulocyte-macrophage); GMCSF; MGC131935; MGC138897; granulocyte-macrophage colony-stimulating factor; CSF; molgramostin; sargramostim; colony-stimulating factor; granulocyte-macrophage colony stimulating factor

Gene ID

1437

mRNA Refseq

NM_000758

Protein Refseq

NP_000749

MIM

138960

UniProt ID

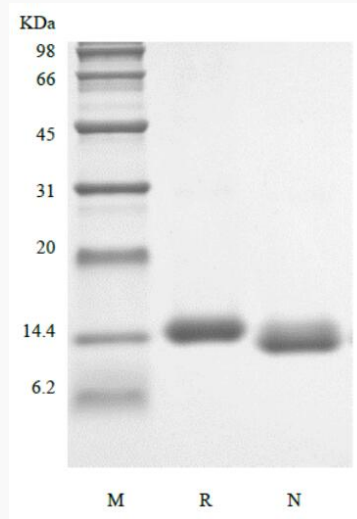
P04141

 Tel: 1-631-559-9269 1-516-512-3133

 Email: info@creative-biomart.com  Fax: 1-631-938-8127

 45-1 Ramsey Road, Shirley, NY 11967, USA

SDS-PAGE



 Tel: 1-631-559-9269 1-516-512-3133

 Email: info@creative-biomart.com  Fax: 1-631-938-8127

 45-1 Ramsey Road, Shirley, NY 11967, USA