

Active Recombinant Human CSF2 Protein

Cat. No. CSF2-1968H Lot. No. (See product label)

SPECIFICATION

Product Overview	Human CSF2 (127 a.a.) full-length recombinant protein expressed in Barley grain (<i>Hordeum vulgare</i>). This protein is endotoxins-free and thus optimal to use in stem cell cultures.
Species	Human
Source	Plants
ProteinLength	127 a.a.
Description	The protein encoded by this gene is a cytokine that controls the production, differentiation, and function of granulocytes and macrophages. The active form of the protein is found extracellularly as a homodimer. This gene has been localized to a cluster of related genes at chromosome region 5q31, which is known to be associated with interstitial deletions in the 5q- syndrome and acute myelogenous leukemia. Other genes in the cluster include those encoding interleukins 4, 5, and 13. [provided by RefSeq, Jul 2008]
Form	Lyophilized
Bio-activity	Activity has been measured by cell-based proliferation assay using TF-1 cells. ED50 is 0.05 ng/mL.
Molecular Mass	30, 38 kDa

 Tel: 1-631-559-9269 1-516-512-3133

 Email: info@creative-biomart.com  Fax: 1-631-938-8127

 45-1 Ramsey Road, Shirley, NY 11967, USA

Endotoxin	Endotoxin level is less than 0.005ng per ug (0.05EU/μg) as measured by LAL assay.
Purity	> 95% by SDS-PAGE
Applications	Western Blot (Recombinant protein) Functional Study SDS-PAGE
Storage	Store at -20 centigrade. Aliquot to avoid repeated freezing and thawing.
Storage Buffer	Lyophilized from PBS, pH 7.2

GENE INFORMATION

Gene Name	CSF2 colony stimulating factor 2 (granulocyte-macrophage) [Homo sapiens]
Official Symbol	CSF2
Synonyms	CSF2; colony stimulating factor 2 (granulocyte-macrophage); granulocyte-macrophage colony-stimulating factor; GM CSF; GMCSF; granulocyte macrophage colony stimulating factor; molgramostin; sargramostim; CSF; colony-stimulating factor; granulocyte-macrophage colony stimulating factor; MGC131935; MGC138897;
Gene ID	1437
mRNA Refseq	NM_000758
Protein Refseq	NP_000749
MIM	138960

 Tel: 1-631-559-9269 1-516-512-3133

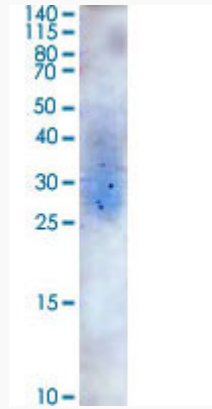
 Email: info@creative-biomart.com  Fax: 1-631-938-8127

 45-1 Ramsey Road, Shirley, NY 11967, USA

UniProt ID

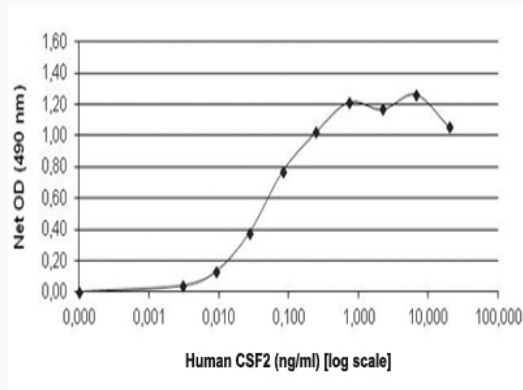
P04141

Quality Control
Testing:



SDS-PAGE Stained with Coomassie Blue

Result of activity
analysis

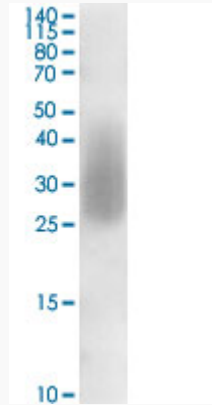


 Tel: 1-631-559-9269 1-516-512-3133

 Email: info@creative-biomart.com  Fax: 1-631-938-8127

 45-1 Ramsey Road, Shirley, NY 11967, USA

**Western Blot
(Recombinant
protein)**



Western blot analysis of CSF2 (Human) Recombinant Protein using protein specific antibody.

 Tel: 1-631-559-9269 1-516-512-3133

 Email: info@creative-biomart.com  Fax: 1-631-938-8127

 45-1 Ramsey Road, Shirley, NY 11967, USA