

Recombinant Human CSF2 Protein, GST-tagged

Cat. No. CSF2-1969H **Lot. No.** (See product label)

SPECIFICATION

Product Overview	Human CSF2 full-length ORF (AAI14000.1, 1 a.a. - 144 a.a.) recombinant protein with GST-tag at N-terminal.
Species	Human
Source	Wheat Germ
Description	The protein encoded by this gene is a cytokine that controls the production, differentiation, and function of granulocytes and macrophages. The active form of the protein is found extracellularly as a homodimer. This gene has been localized to a cluster of related genes at chromosome region 5q31, which is known to be associated with interstitial deletions in the 5q- syndrome and acute myelogenous leukemia. Other genes in the cluster include those encoding interleukins 4, 5, and 13. [provided by RefSeq, Jul 2008]
Molecular Mass	42.7 kDa
AA Sequence	MWLQSLLLLGTVACSIAPARSPSPSTQPWEHVNAIQEARRLLNLSRDAAEMNETV EVISEMFDLQEPTCLQTRLELYKQGLRGLSLTKLKGPLTMMASHYKQHCPPTPETSC ATQIITFESFKENLKDFLLVIPFDCWEPVQE
Applications	Enzyme-linked Immunoabsorbent Assay Western Blot (Recombinant protein) Antibody Production Protein Array

 Tel: 1-631-559-9269 1-516-512-3133

 Email: info@creative-biomart.com  Fax: 1-631-938-8127

 45-1 Ramsey Road, Shirley, NY 11967, USA

Notes	Best use within three months from the date of receipt of this protein.
Storage	Store at -80 centigrade. Aliquot to avoid repeated freezing and thawing.
Storage Buffer	50 mM Tris-HCl, 10 mM reduced Glutathione, pH=8.0 in the elution buffer.
GENE INFORMATION	
Gene Name	CSF2 colony stimulating factor 2 (granulocyte-macrophage) [Homo sapiens]
Official Symbol	CSF2
Synonyms	CSF2; colony stimulating factor 2 (granulocyte-macrophage); granulocyte-macrophage colony-stimulating factor; GM CSF; GMCSF; granulocyte macrophage colony stimulating factor; molgramostin; sargramostim; CSF; colony-stimulating factor; granulocyte-macrophage colony stimulating factor; MGC131935; MGC138897;
Gene ID	1437
mRNA Refseq	NM_000758
Protein Refseq	NP_000749
MIM	138960
UniProt ID	P04141

 Tel: 1-631-559-9269 1-516-512-3133

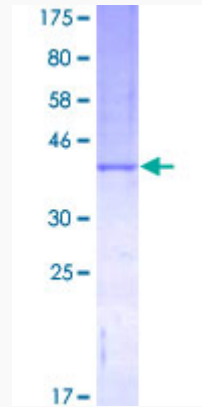
 Email: info@creative-biomart.com  Fax: 1-631-938-8127

 45-1 Ramsey Road, Shirley, NY 11967, USA



Quality Control

Testing:



12.5% SDS-PAGE Stained with Coomassie Blue.

Tel: 1-631-559-9269 1-516-512-3133

Email: info@creative-biomart.com Fax: 1-631-938-8127

45-1 Ramsey Road, Shirley, NY 11967, USA