

Active Recombinant Pig CSF2 Protein (Ala18-Lys144), N-His tagged, Animal-free, Carrier-free

Cat. No. CSF2-207P Lot. No. (See product label)

SPECIFICATION

Product Overview	Recombinant Pig CSF2 Protein (Ala18-Lys144) with N-His tag was expressed in E. coli and Animal-free as well as Carrier-free.
Species	Pig
Source	E.coli
ProteinLength	Ala18-Lys144
Description	Granulocyte-macrophage colony-stimulating factor (GM-CSF) was first identified as a Growth Factors due to its ability to induce proliferation and differentiation of bone marrow progenitors into granulocytes and macrophages. GM-CSF is produced by multiple cell types including activated T cells, B cells, macrophages, endothelial cells and fibroblasts upon receiving immune stimuli. GM-CSF stimulates stem cells to produce granulocytes and monocytes functions as a cytokine.
Form	Lyophilized
Bio-activity	Measure by its ability to induce proliferation in TF-1 cells. The ED50 for this effect is < 3 ng/mL.
Molecular Mass	The protein has a calculated MW of 15.3 kDa. The protein migrates as 17 kDa under reducing condition (SDS-PAGE analysis).

 Tel: 1-631-559-9269 1-516-512-3133

 Email: info@creative-biomart.com  Fax: 1-631-938-8127

 45-1 Ramsey Road, Shirley, NY 11967, USA

Endotoxin	< 0.1 EU/μg of the protein by the LAL method.
Purity	>98% as determined by SDS-PAGE analysis.
Storage	This product is stable after storage at: -20 centigrade for 12 months in lyophilized state from date of receipt. -20 or -80 centigrade for 1 month under sterile conditions after reconstitution. Avoid repeated freeze/thaw cycles.
Storage Buffer	Lyophilized from a 0.2 μm filtered solution of PBS, pH 7.4.
Reconstitution	It is recommended to reconstitute the lyophilized protein in sterile H ₂ O to a concentration not less than 200 μg/mL and incubate the stock solution for at least 20 min to ensure sufficient re-dissolved.
Shipping	The product is shipped with polar packs. Upon receipt, store it immediately at -20 centigrade or lower for long term storage.

GENE INFORMATION

Gene Name	CSF2 colony stimulating factor 2 (granulocyte-macrophage) [<i>Sus scrofa</i>]
Official Symbol	CSF2
Synonyms	CSF2; colony stimulating factor 2 (granulocyte-macrophage); granulocyte-macrophage colony-stimulating factor; CSF; colony-stimulating factor; GM-CSF;
Gene ID	397208
mRNA Refseq	NM_214118

 Tel: 1-631-559-9269 1-516-512-3133

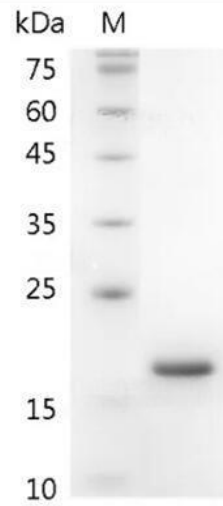
 Email: info@creative-biomart.com  Fax: 1-631-938-8127

 45-1 Ramsey Road, Shirley, NY 11967, USA

Protein Refseq NP_999283

UniProt ID Q29118

**SDS-PAGE analysis
of recombinant
swine GM-CSF.**



 Tel: 1-631-559-9269 1-516-512-3133

 Email: info@creative-biomart.com  Fax: 1-631-938-8127

 45-1 Ramsey Road, Shirley, NY 11967, USA