

# Recombinant Human CSF2 Protein, Myc/DDK-tagged, C13 and N15-labeled

**Cat. No.** CSF2-2419H    **Lot. No.** (See product label)

## SPECIFICATION

<b>Product Overview</b>	CSF2 MS Standard C13 and N15-labeled recombinant protein (NP_000749) with a C-terminal MYC/DDK tag, was expressed in HEK293 cells.
<b>Species</b>	Human
<b>Source</b>	HEK293
<b>Description</b>	The protein encoded by this gene is a cytokine that controls the production, differentiation, and function of granulocytes and macrophages. The active form of the protein is found extracellularly as a homodimer. This gene has been localized to a cluster of related genes at chromosome region 5q31, which is known to be associated with interstitial deletions in the 5q- syndrome and acute myelogenous leukemia. Other genes in the cluster include those encoding interleukins 4, 5, and 13.
<b>Molecular Mass</b>	16.3 kDa
<b>AA Sequence</b>	MWLQSLLLLGTVACISAPARSPSPSTQPWEHVNAIQEARRLLNLSRDAAEMNETV EVISEMFDLQEPTCLQTRLELYKQGLRGLSLTKLKGPLTMMASHYKQHCPPTPETSC ATQIITFESFKENLKDPELLVIPFDCWEPVQETRTRPLEQKLISEEDLAANDILDYKDDD DKV
<b>Purity</b>	> 80% as determined by SDS-PAGE and Coomassie blue staining
<b>Stability</b>	Stable for 3 months from receipt of products under proper storage and handling

 Tel: 1-631-559-9269    1-516-512-3133

 Email: [info@creative-biomart.com](mailto:info@creative-biomart.com)     Fax: 1-631-938-8127

 45-1 Ramsey Road, Shirley, NY 11967, USA

conditions.

**Storage** Store at -80 centigrade. Avoid repeated freeze-thaw cycles.

**Concentration** 50 µg/mL as determined by BCA

**Storage Buffer** 100 mM glycine, 25 mM Tris-HCl, pH 7.3.

## GENE INFORMATION

**Gene Name** CSF2 colony stimulating factor 2 [ Homo sapiens (human) ]

**Official Symbol** CSF2

**Synonyms** CSF2; colony stimulating factor 2 (granulocyte-macrophage); granulocyte-macrophage colony-stimulating factor; GM CSF; GMCSF; granulocyte macrophage colony stimulating factor; molgramostin; sargramostim; CSF; colony-stimulating factor; granulocyte-macrophage colony stimulating factor; MGC131935; MGC138897;

**Gene ID** 1437

**mRNA Refseq** NM\_000758

**Protein Refseq** NP\_000749

**MIM** 138960

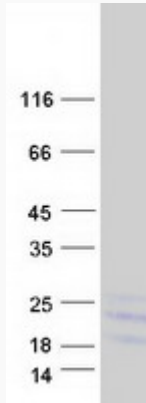
**UniProt ID** P04141

 Tel: 1-631-559-9269 1-516-512-3133

 Email: [info@creative-biomart.com](mailto:info@creative-biomart.com)  Fax: 1-631-938-8127

 45-1 Ramsey Road, Shirley, NY 11967, USA

**SDS-PAGE**



 Tel: 1-631-559-9269 1-516-512-3133

 Email: [info@creative-biomart.com](mailto:info@creative-biomart.com)  Fax: 1-631-938-8127

 45-1 Ramsey Road, Shirley, NY 11967, USA